

INVITATION FOR BID (IFB)

PR104225: CCHA CASA GRANDE | CABINETS, COUNTER & VANITIES



DESCRIPTION: Furnish all required labor, materials and equipment necessary to provide Scope-of-Service at the described location. Work is being authorized under the elected TML TurnKey Recovery ProgramSM administered by SynergyNDS on behalf of Cameron County Housing Authority, a Member of Texas Municipal League Intergovernmental Risk Pool (TMLIRP).

LOCATION: Casa Grande Development | 31ea Single Family Affordable Housing
104 Troywood Circle | Harlingen, Texas 78552

SUBMITTAL INSTRUCTIONS: For purposes of generating an EXPEDITED SUPPLEMENTAL BID - IFB Packet includes scope specifications and bid sheet specific to referenced project.

- Bids shall be received no later than **08/18/19** (emailed to bids@synergynds.com)
- All registered HUB Contractors (through the Texas Comptroller's Office), as well as DBEs are encouraged to participate. Additional Contractor Financial Assistance is available to help support daily HUB/DBE Contractor's Operations under terms and condition of successful contract award.
- Contractor is required to identify and validate all necessary task items, measurements/dimensions &/or other applicable conditions in support of described scope-of-work. Contractor's Bid is to account for all work to be performed in accordance to trade standards and as required by Ordinance & Law (whether or not a 3rd Party Professional has provided additional comment/support material).
- Bid shall be completed and submitted using **ONLY** the Contractor Submittal Form (provided at the end of the IFB Packet). Supplemental Proposal (Valued Approach) to be attached with the IFB Form.
- Bid award will be made based on best overall LUMP SUM project value as determined by SynergyNDS in accordance to market valuation, project demands, critical path scheduling – as well as overall HUD Participation Goals. Contributing factors, in addition to price, may be considered as necessary to help determine bid award based on any additional criteria set forth by the specific TMLIRP Insured Member.
- Bids received after above deadline or that are not submitted in accordance to Submittal Instructions may be rejected without further explanation or contractor notification.

RETURN BID TO: SynergyNDS / TML

TML Turnkey Recovery Program Attention: bids@synergynds.com
Request On-Site Project Visit by emailing bids@synergynds.com

INVITATION FOR BID (IFB)

PR104225: CCHA CASA GRANDE | CABINETS, COUNTER & VANITIES

GENERAL SUMMARY The Casa Grande Development is comprised of a total of 65 Single Family Homes consisting of 2/3/4 Bedroom Models. To date, 31 Units have been impacted by Flood Damage as identified in the IFB. Units average 1153 SF (Finished Space) with an estimated Unit Total at 33,450 SF (Refer to the Attached Appendix). Selective Interior Demo to remove flood affected building materials has been completed to date to include Standard 4ft Flood Cut to all 31 Units. Additional Drying & Decontamination Services have been completed in accordance to Mitigation Standards.

IFB SCOPE-OF-WORK | KITCHEN CABINETS, COUNTERTOPS & VANITIES

31ea Single Family Homes require Fabrication, Delivery and Install of solid-wood (12 Units) Upper Kitchen Cabinets, (31 Units) Base Cabinets, Countertop, Bathroom Vanities & Linen Cabinets. Contractor is to take into consideration and provide response specific to the following BEST approach necessary to realize a successful Cabinet Color & Profile Match (for those Units whereby Upper Cabinets are not initially scheduled for replacement). Contractor will provide Best Recommendation and overall pricing on replacement/restore options specific to the following talking points:

- Replacement of (12 Units) Kitchen Upper Cabinets to include 7ea Standard Units and 5ea ADA Units. Refer to Unit Breakout Summary (Attachment: Exhibits).
- Replacement of Kitchen Base Cabinets are to successfully match the remaining Units with existing Upper Cabinets (Standard Units).
- If Necessary, Replacement of Upper Cabinet Doors will be a considered approach for those cabinets not identified for replacement.
- Contractor should account for additional costs of sanding and color staining of those Upper Cabinets &/or Doors (not replaced) as part of overall BID Solicitation
- Contractor is to provide overall comment if Replacement of **BOTH** Upper & Base Kitchen Cabinets is the only real viable option given Color & Profile Match Criteria and the subsequent cost thereof.

Refer to Appendix for Estimated Unit Breakout and Quantities. Scope includes labor, tools, equipment, fabrication, installation, materials, delivery, supervision, and insurance necessary to complete the work and as governed by industry Best Practices & Standards whether specifically identified in the IFB. All scope-of-work shall be completed in accordance to manufacture specifications, building codes and applicable industry standards. Fabrication of Cabinets is to begin immediately after Contract Award with **scheduled Installation to begin as early as 6weeks from Order Confirmation.** Installation of Cabinets, Countertops, Vanities & Linen Cabinets must be completed no late than 21 days from scheduled start date. Failure to do so can result in applicable back-charges of incurred project costs due to delays determined within Contractor's scope-of-work responsibility.

INVITATION FOR BID (IFB)

PR104225: CCHA CASA GRANDE | CABINETS, COUNTER & VANITIES

SCOPE-OF-WORK (General Summary for Guidance)

KITCHEN CABINETS & COUNTERTOP (Contractor to Validate all Sizes, Measurements & Quantities)

- **7ea (Standard Units)** - Fabricate & Install Kitchen Base & Upper Cabinets according to Specifications (with necessary Trim &/or Fillers) over newly installed VCT/LVT Flooring.
- **19ea (Standard Units)** - Fabricate & Install Kitchen Base Cabinets according to Specifications (with necessary Trim &/or Fillers) over newly installed VCT/LVT Flooring. Upper Cabinets to be further evaluated by Contractor for consideration of all viable options necessary to successfully address Color & Profile Match or Replacement.
- **5ea (ADA Units)** - Fabricate & Install Kitchen Base & Upper Cabinets according to ADA specifications (with necessary Trim &/or Fillers).
- **31ea (All Units)** - Fabricate & Install high pressure plastic laminate Kitchen Countertop with Backsplash in accordance to HUD Specifications. Includes all necessary fillers and caulking. Will consider all other viable material options but should be priced separately if additional cost.

BATHROOM VANITIES (Contractor to Validate all Sizes, Measurements & Quantities)

- **58ea (All Units)** – Fabricate & Install Bathroom Vanities over newly installed tile flooring. Contractor to consider all required specifications necessary to accommodate ADA Units.
- **58ea (All Units)** – The intent is to reset previously installed 1pc-molded vanity countertop/sink. Contractor will need to take this into consideration for overall vanity construction and design.

LINEN CABINETS (Contractor to Validate all Sizes, Measurements & Quantities)

- **41ea (All Units)** – Fabricate & Install Vanity Cabinets over newly installed flooring. Contractor will be required to identify varying sizes/measurements pending Linen Cabinet Location (Unit Model).

CABINET CONSTRUCTION & GENERAL SPECIFICATIONS

Cabinet construction and installation must meet, at a minimum, the criteria for HUD Severe Use Specifications and as defined by the national performance standards set forth in ANSI/KCMA A161.1:

- **Face Frames** – Constructed of $\frac{3}{4}$ inch thick kiln dried hardwood without knots and chosen for tight uniform color, making it fit for a natural finish chosen for tight uniform color, making it fit for a natural finish. The frames are to be glued, screwed, filled and sanded to be able to deliver long-term strength and rigidity. The stiles must be 2 inches wide and the mulls must have a minimum width of 2 inches. Rails, are to be 2 inches wide as well.
- **End Panels** – The exposed ends of the cabinets shall be made of minimum 2-2 grade. $\frac{1}{2}$ inch thick 5-Ply hardwood plywood that's chosen for light uniform color. The cabinet ends that are not exposed can be made up of $\frac{1}{2}$ inch softwood plywood.

INVITATION FOR BID (IFB)

PR104225: CCHA CASA GRANDE | CABINETS, COUNTER & VANITIES

- **Back Panel** - All HUD Severe Use kitchen cabinets are required to use 1/4 inch thick plywood that is glued and nailed or stapled strongly and securely to the cabinet's cleats, ends and shelves.
- **Wall Cabinet Bottoms** - Constructed of 1/2 inch plywood with a front edge that's hardwood banded. Base Bottoms - Made of 1/2 inch thick 2-2 grade plywood. The bottom shall be held up by 3/4 inch thick tough lumber braces that are pressure treated.
- **Drawers** - The front profile of the drawers should match the door's profile. The side and back portions should be constructed of minimum of 11/16 inch solid lumber with four sided drawer box that is made with locking joints. The front of the drawers must be screwed and glued to the drawer box and the bottom must be dadoed into the four sides. The bottom of the drawers should be made up of minimum of 1/4 inch plywood. All the parts of the drawer need to be glued and stapled or nailed together. The drawers should be mounted on a pair of metal side rails that are ball-bearing and with 75 lb. capacity.
- **Hardware** - The hardware for HUD severe use kitchen cabinets must be corrosion resistant. All hinges are to be full-wrap, partially concealed.
- **Finish** - The exposed surfaces as well as the interior of the HUD severe use kitchen cabinets should be factory finished.
- **Countertops** - These parts of the cabinet must be post shaped, high pressure plastic that is laminated, at a minimum, to 3/4 inch thick plywood. The ends as well as the countertops' bottom front edge must have a firm wood mould. Also, the edge of the countertop must be no-drip.

ADDITIONAL CABINET REQUIREMENTS:

All cabinets must be fully enclosed with backs, bottoms, sides, and tops on wall cabinets; and backs, bottoms, and sides on base cabinets, with certain specified exceptions on kitchen sink fronts, sink bases, oven cabinets, and refrigerator cabinets. All cabinets designed to rest on the floor must be provided with a toe space at least two inches deep and three inches high.

- It is the Contractor's responsibility to identify and meet, at a minimum, HUD Severe Use Specifications and in compliance with performance standards set forth in ANSI/KCMA A161.1.
- All vanity and linen cabinets must meet the same construction requirements as wall cabinets.
- Doors must be properly aligned, have means of closure, and close without excessive binding or looseness.
- All materials must ensure rigidity in compliance with performance standards.
- Face frames, when used, must provide rigid construction.
- Corner or lineal bracing must be provided at points where necessary to ensure rigidity and proper joining of various components.
- All wood parts must be dried to a moisture content of 10 percent or less at time of fabrication.

INVITATION FOR BID (IFB)

PR104225: CCHA CASA GRANDE | CABINETS, COUNTER & VANITIES

- All interior exposed surfaces shall be free of saw marks and poor workmanship, and shall be covered with a laminate material or have a minimum of one coat of clear or pigmented finish.
- Exposed cabinet hardware must comply with Builders Hardware Manufacturing Association finishing standards.
- All exterior exposed surfaces and edges except the edges of end panels and the edges of back panels, shall be free of saw marks and other imperfections and shall be filled and sanded, edge-banded, or otherwise finished to ensure compliance with the performance standards.
- All exterior exposed parts of cabinet must have nails and staples set and holes filled.
- All exposed construction joints must be fitted in a workman-like manner consistent with specifications.

REMAINING PAGE LEFT INTENTIONALLY BLANK

INVITATION FOR BID (IFB)

PR104225: CCHA CASA GRANDE | CABINETS, COUNTER & VANITIES

GENERAL TERMS & CONDITIONS (Not otherwise specified under SUBMITTALS)

- Contractor shall be responsible for field verifying all conditions, dimensions & quantities prior to implementation of this scope of work. Any Exhibits, Plans, Drawing &/or Other Supporting Documents have been included for general reference purposes only.
- Contractor shall provide Cabinet, Vanity, and Countertop Samples for selection purposes five (5) business days after contract award.
- Contractor is to obtain their own permits. Permits can be obtained by contacting the Building Department or other administering entity. Permit Fees are reimbursable direct from SynergyNDS (in addition to contractor's Lump Sum Proposal) if incurred and with proper documentation.
- Contractor is responsible to identify and satisfactorily address all regulatory requirements, including but not limited to Codes & Standards, HUD Guidelines and ADA Specifications.
- Contractor is to abide by all applicable OSHA requirements and standards. Contractor shall require all employees to utilize proper PPE, including but not limited to: fall protection harnesses, hard hats, safety glasses, safety foot wear, and gloves.
- Contractor is responsible for submitting applicable project and associated contract documents as defined by Architectural Drawings Specifications, Engineering Requirements, Certificates of Insurance, Change Order Requests and any written or documented deviations from approved scopes-of-work or Contract.
- Contractor may be asked to provide Material Safety Data Sheets (MSDS) to the industrial hygienist of record (IHC, Corp.) for chemical-based products that will be used including, but not limited to, glues, cleaners, solvents, anti-microbial products, sanitizing agents, etc. The industrial hygienist of record retains the right to not allow the use of any of the products selected.
- Contractor shall be responsible for supplying any and all necessary equipment, tools and materials to complete the scope of work unless directed otherwise in the IFB. This includes but is not limited to: Rental Equipment, Dumpsters, Storage Containers, Jobsite Trailer, General Conditions, Associated Expenses, Overhead & Profit which are to be included in the IFB Contractor Lump Sum Proposal.
- Contractor shall protect all unaffected wall finishes, floor finishes, windows, electrical systems, mechanical systems, communication systems, life safety systems, security systems, HVAC control systems, plumbing systems, lighting systems, structurally related components, etc., from damage as a result of the contracted Scope-of-Work.
- Contractor shall be responsible for securing the flood affected areas from access by non-authorized building occupants, including facility staff not directly part of the restoration efforts. This includes securing work area(s) as identified in the IFB Scope-of-Work.

INVITATION FOR BID (IFB)

PR104225: CCHA CASA GRANDE | CABINETS, COUNTER & VANITIES

- Contractor shall keep the Project Site and the surrounding areas free from the accumulation of waste materials, debris, etc. caused by operations performed under this Scope of Work. Upon completion, the contractor shall remove from Project Site, and surrounding areas:
 - Any waste materials, debris, etc. caused by completing the outlined Scope of Work.
 - Any tools, cleaning equipment, machinery, surplus materials originally furnished by the contractor
- Contractor shall be responsible for cleaning any and all residual caulking from all unaffected surfaces.
- Contractor shall provide and implement a site-specific health and safety plan to include hazard communication and related OSHA.
- Contractor is responsible to ensure that any sub-contractors comply with the provisions and terms of this scope of work.
- If the Contractor determines that deviations, modifications (change order or supplemental costs) from the initial scope-of-work are required, the Contractor shall submit a written request to SynergyNDS for review and approval prior to start of any additional work not otherwise included in initial BID. The written request will contain, at a minimum:
 - Reason for deviation or modification
 - Description of deviation or modification
 - Estimated time required for deviation or modification
 - Project cost addition or subtraction for deviation or modification
- Contractor is NOT responsible for any conditions or activities the building owner or employees implemented prior to their arrival to the job site. This includes removal of contents, equipment or personnel from the affected areas to the non-affected areas of the building.
- During the performance of other Contractor(s) Scope-of-Work, pre-existing damage to the building, building system failures, etc. may be found. If this occurs, the Contractor will identify, document and record these deficiencies for review and consideration. The item shall be described, the location of the item shall be noted, the date the item was discovered and why the item was discovered. The Contractor shall notify the Project Manager of any additional discoveries.

INVITATION FOR BID (IFB)

PR104225: CCHA CASA GRANDE | CABINETS, COUNTER & VANITIES

PAYMENT: Project is managed by SynergyNDS, Inc., under the TML Turnkey Recovery Direct Repair Program. Payment will be made directly from the Turnkey Recovery Managed Direct Repair Program to the contractor(s) in accordance with described terms & conditions. Qualified contractors may be eligible for an upfront material deposit or progress payments as determined prior to BID AWARD. **Contractor must be registered in the MVP (Managed Vendor Program) whereby required contractor documents must be uploaded to the database. There is annual \$49.95 processing fee as part of the initial contractor vetting and background check.**

PAYMENT TERMS: Payments will be made after inspection and approval of work by SynergyNDS, City Building Official &/or Insurance Adjuster. Accurate invoices and required project documentation must be submitted to SynergyNDS for project audit prior to payment. *Material Deposits &/or Advanced Payments require Contractor to complete online registration in the FMIT Managed Vendor Program (MVP). MVP has an annual \$49.99 Registration Fee to be part of the Contractor Direct Repair Program. Material Deposits &/or Advanced Payments will require a 2% Invoice Payment Discount.

HOLD HARMLESS: To the fullest extent permitted by law, the Contractor/Vendor shall indemnify, defend, and hold harmless SynergyNDS, Inc & TML, their officers, agents, employees, elected, and appointed officials, Insurance Representatives and volunteers from and against any and all claims, losses or liability, including attorney's fees, arising from injury or death to persons or damage to property occasioned by any act, omission, or failure of the Contractor/Vendor and any of its officers, agents, employees, and volunteers in satisfying the terms required by this contract.

RIGHT TO ACCEPT, REJECT AND WAIVE DEFECTS: TML &/or Contracting Agent reserves the right to: reject all quotations; waive formalities, technical defects, and minor irregularities; accept the quotation (if any) deemed most advantageous to and in the best interests of Insured Members of TMLIRP. Award will be based on price, contractor's daily performance capabilities, availability to provide the specified services when required &/or in accordance to critical path scheduling.

DAMAGES: Contractor will be held liable for any damage caused to the building and ancillary structure, and/or injury to the occupants resulting from the execution of the work or from not exercising proper precautionary protective measures. Any cost of repair/replacement resulting from damages shall be at the contractor's expense.

WORK-SITE PRACTICES:

Contractor's workers, as well as the various trade contractors entering or leaving the work area, will all attend a site-specific safety meeting as well as daily safety meetings prior the scheduled workday. Contractor's workers entering or leaving the work area will don or remove personal protective equipment and clothing in the staging area outside of each work area. All debris & trash in the work area will be removed and disposed.

INVITATION FOR BID (IFB)

PR104225: CCHA CASA GRANDE | CABINETS, COUNTER & VANITIES

WORKER PERSONAL PROTECTION EQUIPMENT: The National Institute for Occupational Safety and Health (NIOSH) provides the following interim guidelines and warnings to restoration workers.

- Steel toed leather boots should be worn. Tennis shoes or sneakers should *not* be worn because they will transfer contamination and will not prevent punctures, bites, or crush injuries.
- Goggles, safety glasses with side shields or full-face shields shall be used when performing restoration related activities that involve demolition, cutting or the use of ANY power tools. Sun/glare-protective lenses may be needed in some work settings. The use of goggles or protective eyewear should also be worn during the application of any cleaners, sanitizers or disinfectants.
- Soft hat or another protective head cover. Wear an American National Standards Institute (ANSI) rated hardhat if there is any danger of falling debris or electrical hazards.
- Hearing protection (when working in an environment with any noise that you must shout over to be heard).
- Comfortable, form fitting, light weight clothing including long pants and a long-sleeved shirt or coveralls. Additional PPE, respiratory protection, or clothing may be required when specific exposure hazards are identified or expected at the work site. In some instances, the protective ensemble components (garment, boots and gloves) may need to be impervious to contaminated flood or other site-specific chemical, physical, or biological hazards. In all instances, workers are advised to wash their hands with soap and clean water, especially before eating or drinking. Protect any cuts or abrasions with waterproof gloves and dressings. The use of insect repellent, sun block and lip balm may also be required for some work environments. Drink plenty of bottled water and take frequent rest breaks to avoid overexertion.

THERMAL STRESSES: HEAT: Workers are at serious risk for developing heat stress. Excessive exposure to hot environments can cause a variety of heat-related problems, including heat stroke, heat exhaustion, heat cramps, and fainting. To reduce the potential for heat stress, drink a glass of fluid every 15 to 20 minutes and wear loose- fitting clothing. Additionally, incorporate work-rest cycles into work routines and when possible distribute the workload evenly throughout the day.

****Temporary cooling to the work areas shall only be authorized by the owner's representative based on the actual need for the work being performed. Where the conditions allow for the operation of part or all of the ventilation systems serving the work area then the need for temporary cooling is NOT necessary. The work area should be maintained at conditions that meet OSHA requirements for health and safety.****

INVITATION FOR BID (IFB)

PR104225: CCHA CASA GRANDE | CABINETS, COUNTER & VANITIES

WORKING IN CONFINED SPACES: If you are required to work in a boiler, furnace, pipeline, pit, pumping station, septic tank, sewage digester, storage tank, utility vault, well, or similar enclosure, you should be aware of the hazards of working in confined spaces. A confined space has one or more of the following characteristics:

- limited openings for entry or exit;
- unfavorable natural ventilation; or
- Is not designed for continuous worker occupancy.

Toxic gases, a lack of oxygen, or explosive conditions may exist in the confined area, resulting in a potentially deadly atmosphere. Because many toxic gases and vapors cannot be seen or smelled, never trust your senses to determine if safe entry is possible. **Never** enter a confined space unless you have been properly trained, even to rescue a fellow worker! If you need to enter a confined space and do not have the proper training and equipment, contact your local fire department for assistance.

CONTRACT IMPLEMENTATION: Contract will be awarded upon review of all bids and proposals received by SynergyNDS. Initiation of contract is engaged upon written bid award letter. At such time, Contractor signed Request for Service Pricing (RFP) will serve as Contract. Complete Contract engagement will occur upon SynergyNDS receipt of all required documentation including but not limited to:

- Bonding if Required (Performance Bond &/or Payment Bond)
- Certificate of General Liability Insurance
- Certificate of Auto Insurance
- Certificate of Worker's Compensation or Letter of Exemption
- Contractor's W-9
- State Licenses

Further description of insurance requirements is listed in "Insurance & Licensing Requirements."

ASSIGNMENT OF CONTRACT: Contractor shall not assign the contract or any part thereof to any person, firm, corporation or company unless such assignment is approved in writing by the Purchasing Agent. Such acceptance shall be at the sole discretion of the SynergyNDS upon request of the Contractor. Upon approved and executed written authorization, Contractor will be responsible for coordination of work with other trades. Failure to coordinate this work shall not constitute additional cost as governed by the Lump Sum Contract Award.

ASSIGNMENT OF CONTRACTOR: Contractor is responsible for supplying all required Personal Protective Equipment (PPE), including but not limited to the furnishing and appropriate use of: hard hat(s), safety glasses, face shields, ear plugs, gloves, boots, fall protection (where required), breathing protection (where required), tie off ropes/apparatuses/points (where required), fire extinguishers, first aid kits, etc. Contractor is required to be familiar with and follow all OSHA and State of Florida's safety requirements.

INVITATION FOR BID (IFB)

PR104225: CCHA CASA GRANDE | CABINETS, COUNTER & VANITIES

Contractor is to hold daily jobsite safety meetings that review the work to be performed, the hazards involved and the methods for reducing and eliminating such hazards, as well as maintain meeting records, - including attendance lists, which shall be kept onsite and available for SynergyNDS review at all times. Contractor shall be solely liable for any and all OSHA violations associated with his/her employees.

SynergyNDS reserves the right to hold weekly progress meetings for which the Subcontractor shall attend. Contractor shall be responsible for daily cleanup of the work performed herein. Failure to cleanup daily after trade will result in cleanup supplementation at Contractor's cost. Twenty-Four (24) hour notice will be given prior to supplementation. Contractor shall be responsible for delivery, loading, unloading, storage, protection, etc. of all work provided herein.

ENERGY EFFICIENCY: The Contractor shall comply with all mandatory standards and policies relating to energy efficiency which are contained in the energy conservation plan issued in compliance with the Energy Policy and Conservation Act (Pub.L. 94-163) for the State in which the work under this contract is performed.

PROCUREMENT OF RECOVERED MATERIALS: (a) In accordance with Section 6002 of the Solid Waste Disposal Act, as amended by the Resource Conservation and Recovery Act, the Contractor shall procure items designated in guidelines of the Environmental Protection Agency (EPA) at 40 CFR Part 247 that contain the highest percentage of recovered materials practicable, consistent with maintaining a satisfactory level of competition. The Contractor should procure items designated in the EPA Guidelines that contain the highest percentage of recovered materials practical unless the Contractor determines that such items: (1) are not reasonably available in a reasonable period of time; (2) fail to meet reasonable performance standards, which shall be determined on the basis of the guidelines of the National Institute of Standards and Technology; (3) are only available at an unprofitable price.

FAILURE TO COMPLY: For failure to deliver in accordance with specifications, SynergyNDS may cancel the contract or any part thereof and purchase services on the open market, charging any additional cost to the Contractor. Contractor shall comply with all applicable state, federal and local codes, and pay all permits, licenses and certificates, and other fees as required by the work.

INVITATION FOR BID (IFB)

PR104225: CCHA CASA GRANDE | CABINETS, COUNTER & VANITIES

INSURANCE & LICENSING REQUIREMENTS: Before starting work, the Contractor will provide SynergyNDS proof of Worker's Compensation and Commercial and Public Liability Insurance. The Contractor must be licensed to do business in the State of Florida and SynergyNDS must be named as an additional insured on general liability insurance certificate.

Contractor will need to go to www.syngeryndst.com and complete the initial registration for the Managed Vendor Program (MVP). Contractor will be required to upload the following information (when applicable) prior to contract award and eligible material deposits.

- The Contractor will carry Worker's Compensation Insurance for all employees engaged in work at the site, in accordance with State or Territorial Worker's Compensation Laws.
- Commercial and Public Liability with bodily injury and property damage limits will be at a combined single limit of at least \$500,000 to protect the contractor and each subcontractor against claims for injury to or death of one or more persons.
- Automobile Liability on owned and non-owned motor vehicles used on the site(s), or in connection with the sites, for a combined single limit for bodily injury and property damages of not less than \$500,000.00 per occurrence.
- Builder's Work Insurance limit of at least \$5,000.00 per occurrence and \$10,000.00 aggregate.
- Professional Liability \$1,000,000 per occurrence (if applicable).

Contractor will not allow insurance coverage to lapse and will provide Turnkey Recovery Project Manager with updated Certificates of Insurance as necessary. All policies must provide that at least thirty (30) days' notice of cancellation will be given to the FMIT Project Manager and the contractor. All Contractor employees &/or subcontractors are bound by the Insurance Requirement. **Contractor is the sole responsible party for all its Employee &/or SubContractor infractions, accidents, damages and all general liability concerns that occur, whether directly or indirectly, as related to Contracted Scope-of-Work.**

The certificate holder(s) must be noted as:

Synergy NDS, Inc.
1400 Sarno Rd
Melbourne, FL 32935

INVITATION FOR BID (IFB)

PR104225: CCHA CASA GRANDE | CABINETS, COUNTER & VANITIES

This DOES NOT represent a commitment to buy. Any ACTUAL order resulting from this solicitation will be confirmed by Contract Engagement.

CONTRACTOR SUBMITTAL FORM

Company Name _____

Address: _____

City _____ State _____ Zip _____

Phone No _____ Email _____

Contractor Certification: ☐ DBE ☐ WBE/WOSB ☐ HUB ☐ SDVOSB/VOSB

I, the undersigned, have read and understood all applicable Terms & Conditions as described in the IFB Packet preceding the attached Contractor Submittal Form.

Company Contact _____ Title _____

Signature: _____ Date: _____

LUMP SUM PROPOSAL – SUBMITTAL DEADLINE 8/18/19

Primary IFB Scope & Specifications @ 31 Ea Units \$ _____

☐ Required | ☐ Requested | Material Deposit \$ _____

*Material Deposits &/or Advanced Payments require Contractor to complete online registration in the Managed Vendor Program (MVP). MVP has an annual \$49.99 Registration Fee to be part of the Contractor Direct Repair Program. Material Deposits &/or Advanced Payments will require a 2% Invoice Payment Discount.

***Contractor is encouraged to Provide Alternative & Valued Engineer Approach on Separate Submittal to be attached to this IFB Form. All Proposals will be Considered and Evaluated based on Overall Merit and Cost. SynergyNDS reserves the right to Negotiate with Contractors specific to Supplemental Proposals prior to Final Contract Award.**

RETURN BIDS

ATTENTION | PR104225– Cabinets, Counters & Vanities | bids@synergynds.com

CCHA CASA GRANDE - CABINET/VANITY BREAKOUT SUMMARY

UNIT	STREET	BDRM & BATH	FLOOR PLAN	FINISHED EST SF	REPLACE BASE CABS	REPLACE UPPER CABS	REPLACE STANDING CAB	REPLACE VANITIES
0	Troywood Circle	3 Bdrm	A	1200	YES		1EA HALLWAY	2 HALL BATH
108	Troywood Circle	4 Bdrm	D	1350	YES	YES	1EA HALLWAY	2 HALL BATH
109	Troywood Circle	4 Bdrm	C	1300	YES		HALL & MSTR BDRM	HALL & MSTR BATH
110	Troywood Circle	3 Bdrm - H	E	1200	YES	YES	1EA HALLWAY	HALL & ADA BATH
111	Troywood Circle	3 Bdrm	B	1150	YES		2EA HALLWAYS	2 HALL BATH
112	Troywood Circle	3 Bdrm	B	1150	YES		2EA HALLWAYS	2 HALL BATH
113	Troywood Circle	3 Bdrm - H	E	1200	YES	YES	1EA HALLWAY	HALL & ADA BATH
114	Troywood Circle	3 Bdrm	A	1200	YES	YES	1EA HALLWAY	2 HALL BATH
115	Troywood Circle	3 Bdrm	B	1150	YES		2EA HALLWAYS	2 HALL BATH
116	Troywood Circle	3 Bdrm	B	1150	YES	YES	2EA HALLWAYS	2 HALL BATH
117	Troywood Circle	3 Bdrm	A	1200	YES	YES	1EA HALLWAY	2 HALL BATH
118	Troywood Circle	3 Bdrm - H	E	1200	YES	YES	1EA HALLWAY	HALL & ADA BATH
119	Troywood Circle	3 Bdrm	B	1150	YES	YES	2EA HALLWAYS	2 HALL BATH
120	Troywood Circle	4 Bdrm	C	1300	YES		HALL & MSTR BDRM	HALL & MSTR BATH
122	Troywood Circle	3 Bdrm	B	1150	YES		2EA HALLWAYS	2 HALL BATH
124	Troywood Circle	3 Bdrm	A	1200	YES		1EA HALLWAY	2 HALL BATH
4406	Wood Ave	4 Bdrm	D	1350	YES		HALL & BATHROOM	2 HALL BATH
4410	Wood Ave	2 Bdrm	G	900	YES		1EA HALLWAY	HALL BATH
4414	Wood Ave	3 Bdrm	A	1200	YES		1EA HALLWAY	2 HALL BATH
110	Flores Ave	3 Bdrm	B	1150	YES		1EA HALLWAY	HALL & MSTR BATH
112	Flores Ave	3 Bdrm	A	1200	YES		1EA HALLWAY	2 HALL BATH
114	Flores Ave	3 Bdrm - H	E	1200	YES	YES	1EA HALLWAY	HALL & ADA Bath
115	Flores Ave	3 Bdrm	A	1200	YES		1EA HALLWAY	2 HALL BATH
116	Flores Ave	4 Bdrm	D	1350	YES		HALL & BATHROOM	2 HALL BATH
117	Flores Ave	2 Bdrm	F	900	YES	YES	1EA HALLWAY	HALL BATH
200	Flores Ave	2 Bdrm	F	900	YES		1EA HALLWAY	HALL BATH
201	Flores Ave	3 Bdrm	B	1150	YES	YES	1EA HALLWAY	2 HALL BATH
202	Flores Ave	3 Bdrm - H	E	1200	YES	YES	1EA HALLWAY	HALL & ADA BATH
204	Flores Ave	3 Bdrm	B	1150	YES		1EA HALLWAY	2 HALL BATH
206	Flores Ave	3 Bdrm	A	1200	YES		1EA HALLWAY	2 HALL BATH
208	Flores Ave	2 Bdrm	F	900	YES		1EA HALLWAY	HALL BATH
31 TOTAL	TOTAL ESTIMATED SF @			36200	31 TOTAL	12 EA	41 EA	58 EA
					26 STANDARD 5 ADA	7 STANDARD 5 ADA	VARYING DIMINSIONS	VARYING DIMINSIONS

Contents Information

Member/Organization

Cameron County Housing Association

Specific Location/Room Name (ie Main Entrance, Kitchen, Office, etc.)

PM Snapshot

Submittal Date

07/15/2019

Applicable Project

Location 015 - 107 Troywood Cir

Damages Description

Kitchen Cabinet, Vanity & Linen Cabinet

Submittal Time

12:32 PM

Photos/Notes

Photo 1



Photo 1 Caption
Kitchen Cabinets

Photo 2



Photo 2 Caption
Kitchen Cabinets

Turnkey Recovery Damage Photos Report

Photo 3



Photo 3 Caption
Kitchen Base Cabinets

Photo 4



Photo 4 Caption
Kitchen Base Cabinets

Photo 5



Photo 5 Caption
Kitchen Upper Doors

Photo 6



Photo 6 Caption
ADA Kitchen Cabinets

Turnkey Recovery Damage Photos Report

Photo 7



Photo 7 Caption
ADA Kitchen Cabinets

Photo 8



Photo 8 Caption
Bath Vanity Molded Counter/Sink

Photo 9



Photo 9 Caption
Hall Linen Closet - Example

Photo 10



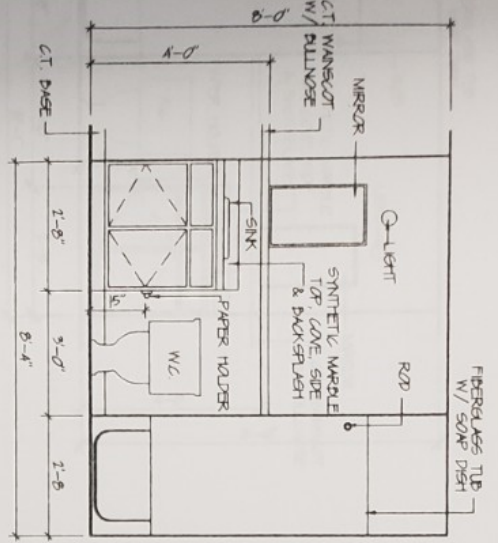
Photo 10 Caption
Hall Linen Closet - Outside Bathrooms

Photo 11

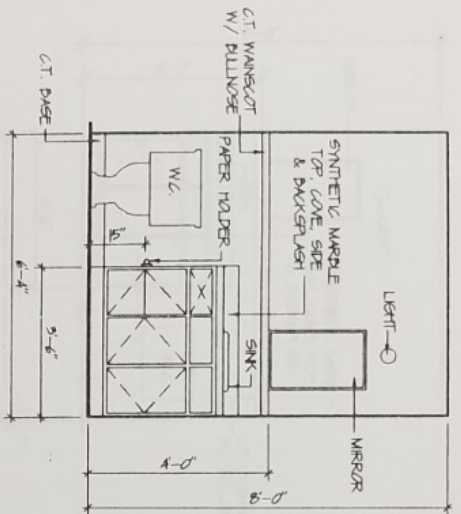


Photo 11 Caption

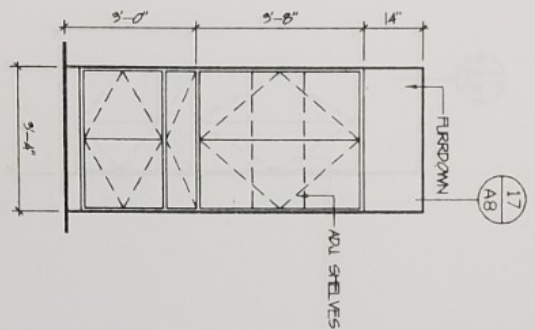
Linen Closet - 2bdrm Hall



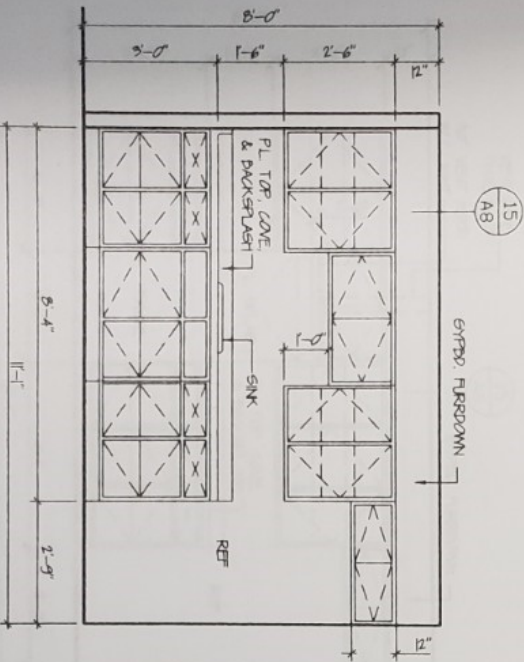
1 CABINET ELEVATION
SCALE: 3/8"=1'-0"



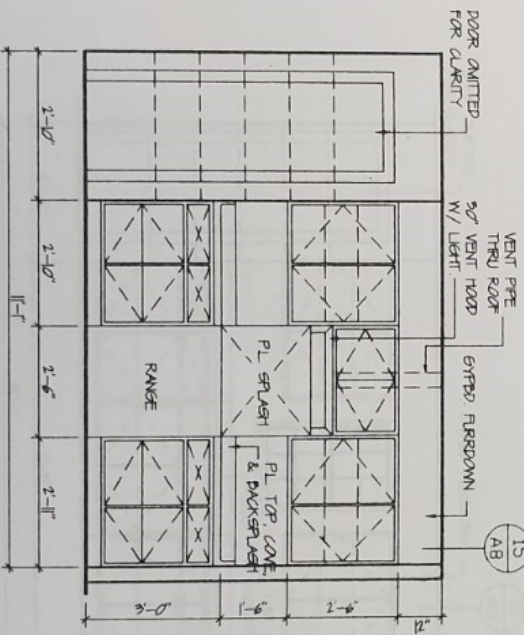
2 CABINET ELEVATION
SCALE: 3/8"=1'-0"



3 CABINET ELEVATION
SCALE: 3/8"=1'-0"



4 CABINET ELEVATION
SCALE: 3/8"=1'-0"



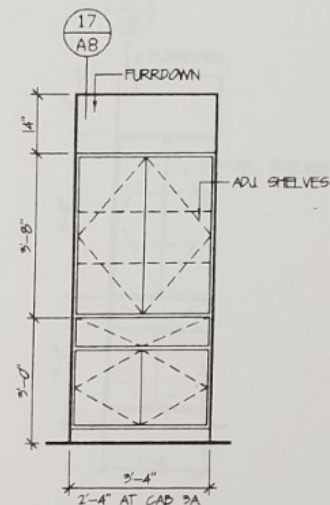
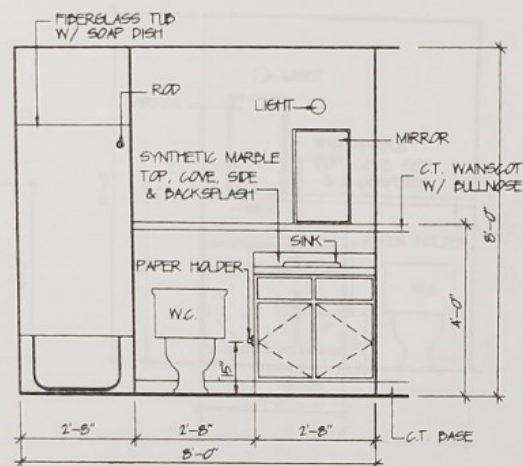
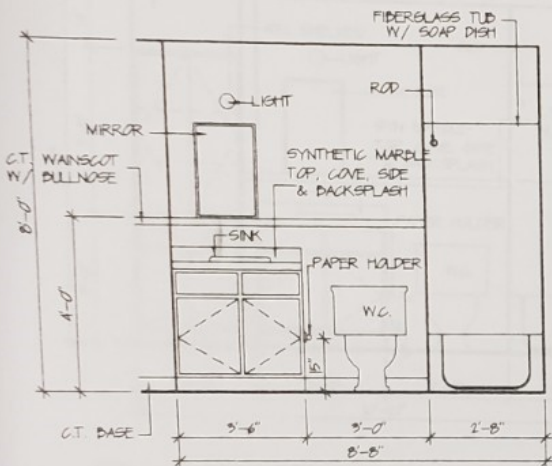
5 CABINET ELEVATION
SCALE: 3/8"=1'-0"

BATH NOTES:

1. PROVIDE PLUMBING DETAIL AT ALL BATH ACCESSORIES
2. PROVIDE 4'-0" HIGH C.T. WAINSCOT ON MOISTURE RESISTANT GYPSO. AT ALL WALLS THINSET APPLICATION
3. INSULATE ALL WALLS IN BATHROOM TYP.
4. BULLNOSE ALL EXPOSED EDGES OF C.T. WAINSCOT. TYPICAL
5. ALL CABINETS TO BE STAINED
6. PROVIDE 8" VANITY W/ SYNTHETIC MARBLE TOPS W/ INTERIOR DOWN AND SIDE GRUBBERS
7. PROVIDE 2" X 6" NO PLUMBING AT WATER CLOSET PERIMETER AT 25' AFF.

GENERAL NOTES:

1. PROVIDE (8)-3/4" WD SHELVES (PTD) AT ALL INTERIO. SIO. ROOMS AND PAINTRES TYPICAL ALL UNITS
2. PROVIDE (0)-3/4" WD SHELF (PTD) AND METAL ROD AT ALL INTERIOR CLOSETS TYPICAL ALL UNITS
3. PROVIDE (0)-1/2" WATER RESISTANT GYPSO. @ ALL BATHROOM WALLS AND CEILINGS TYP.
4. PROVIDE (0)-1/2" TYPE X GYPSO. AT ALL WATER HEATER CLOSETS WALLS AND CEILINGS TYPICAL ALL UNITS
5. REFER TO MECHANICAL PLANS FOR WALL DOWNERS AND THEIR LOCATIONS TYP.
6. ALL CABINETS TO HAVE SOFTPLASTERS & TO BE STAINED TYPICAL ALL UNITS



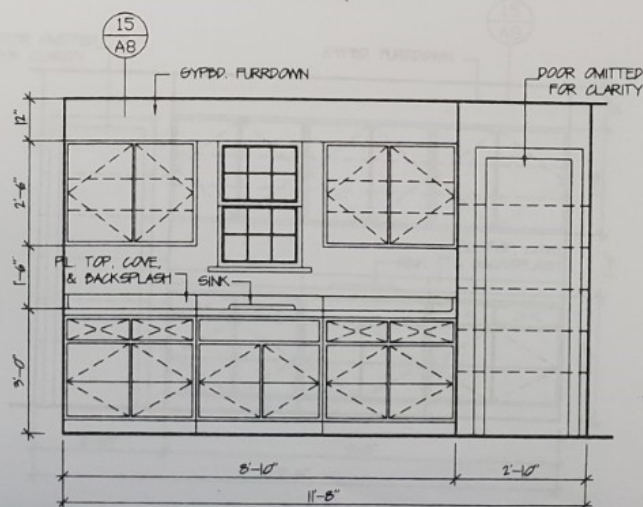
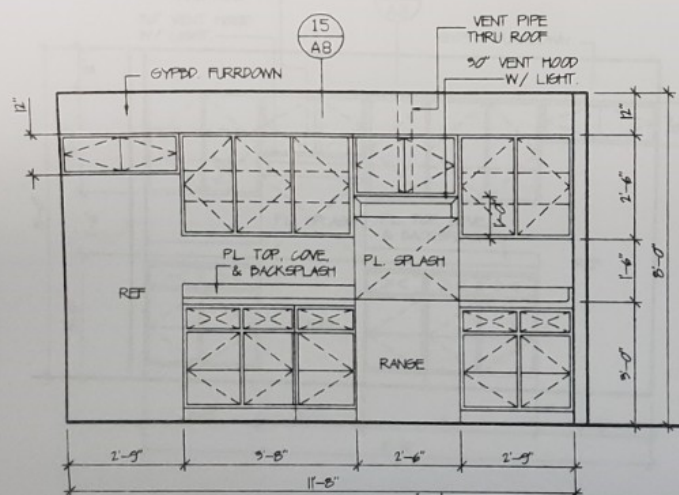
1 CABINET ELEVATION
SCALE: 3/8"=1'-0"

2 CABINET ELEVATION
SCALE: 3/8"=1'-0"

3 CABINET ELEVATION
SCALE: 3/8"=1'-0"

BATH NOTES:

1. PROVIDE BLOCKING BEHIND ALL BATH ACCESSORIES
2. PROVIDE 4'-0" HIGH C.T. WAINSCOT ON MOISTURE RESISTANT GYPDD. AT ALL WALLS THINSET APPLICATION
3. INSULATE ALL BATHROOM WALLS TYP.
4. BULLNOSE ALL EXPOSED EDGES OF C.T. WAINSCOT TYPICAL
5. ALL CABINETS TO BE STAINED
6. PROVIDE 18" VANITY W/ SYNTHETIC MARBLE TOPS W/ INTEGRAL BOWL AND SIDE SPLASHES
7. PROVIDE 2 X 6 WD BLOCKING AT WATER CLOSET PERIMETER AT 33" AFF.

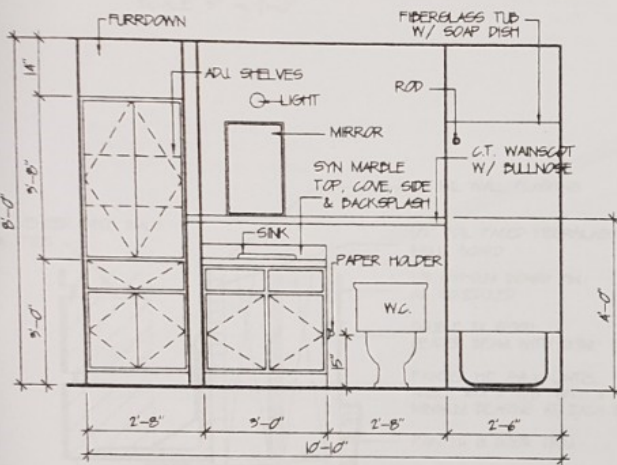


4 CABINET ELEVATION
SCALE: 3/8"=1'-0"

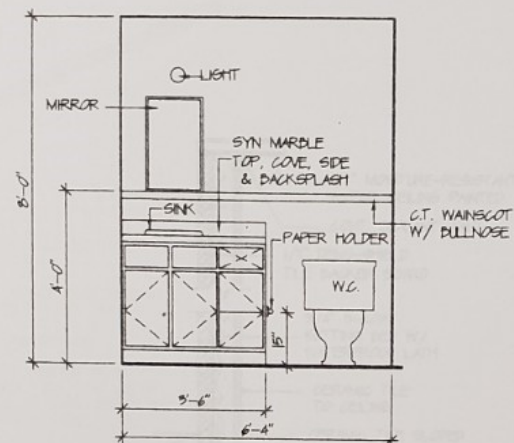
5 CABINET ELEVATION
SCALE: 3/8"=1'-0"

GENERAL NOTES:

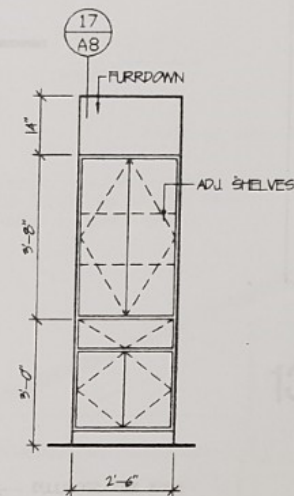
1. PROVIDE (5)-3/4" WD SHELVES (PTD) AT ALL INTERIO STO ROOMS AND PANTRIES TYPICAL ALL UNITS.
2. PROVIDE (1)-3/4" WD SHELF (PTD) AND ROD AT ALL INTERIOR CLOSETS TYPICAL ALL UNITS.
3. PROVIDE (1)-PLY 1/2" WATER RESISTANT GYPDD @ ALL BATHROOM WALLS AND CEILINGS TYP.
4. PROVIDE (1)-PLY 5/8" TYPE X GYPDD. AT ALL WATER HEATER CLOSETS WALLS AND CEILINGS TYPICAL ALL UNITS
5. REFER TO MECHANICAL PLANS FOR WALL LOUVERS AND THEIR LOCATIONS TYP.
6. ALL CABINETS TO HAVE SIDE SPLASHES & TO BE STAINED TYPICAL ALL UNITS.



1 CABINET ELEVATION
SCALE: 3/8"=1'-0"



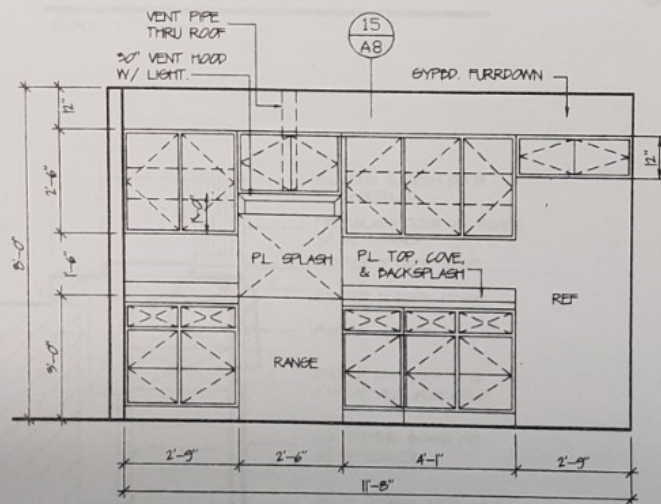
2 CABINET ELEVATION
SCALE: 3/8"=1'-0"



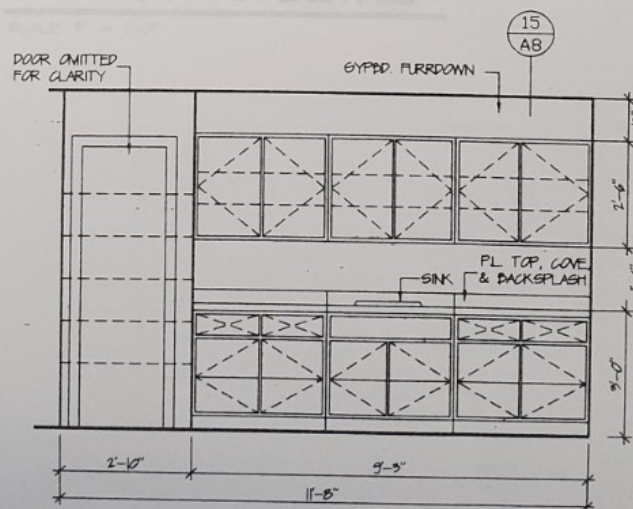
3 CABINET ELEVATION
SCALE: 3/8"=1'-0"

BATH NOTES:

1. PROVIDE BLOCKING BEHIND ALL BATH ACCESSORIES
2. PROVIDE 4'-0" HIGH C.T. WAINSCOT ON MOISTURE RESISTANT GYPD. AT ALL WALLS THINSET APPLICATION
3. INSULATE ALL BATHROOM WALLS TYP. TUB. EXTERIOR WALLS ONLY.
4. BULLNOSE ALL EXPOSED EDGES OF C.T. WAINSCOT. TYPICAL
5. ALL CABINETS TO BE STAINED
6. PROVIDE 18" VANITY W/ SYNTHETIC MARBLE TOPS W/ INTEGRAL BOWL AND SIDE SPLASHES.
7. PROVIDE 2 X 6 WD BLOCKING AT WATER CLOSET PERIMETER AT 33" AFF.



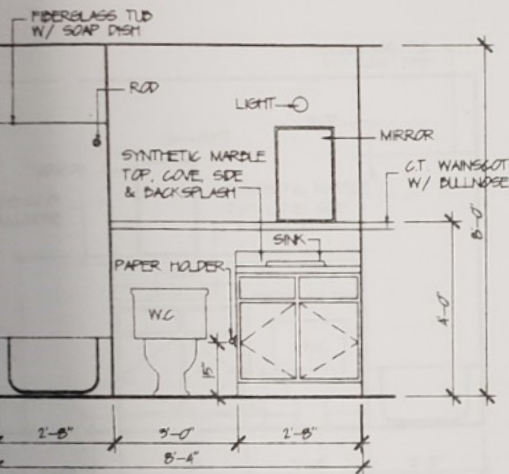
4 CABINET ELEVATION
SCALE: 3/8"=1'-0"



5 CABINET ELEVATION
SCALE: 3/8"=1'-0"

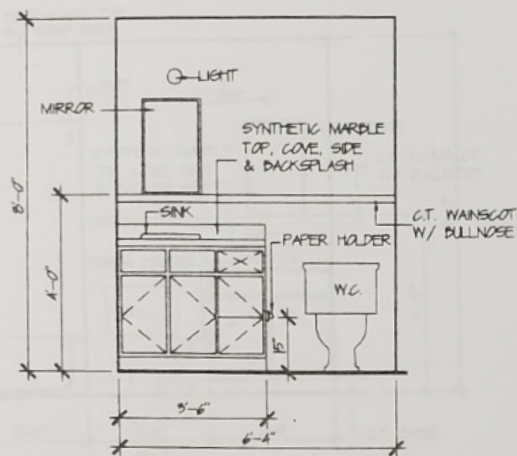
GENERAL NOTES:

1. PROVIDE (5)-3/4" WD SHELVES (PTR) AT ALL INTERIO STO. ROOMS AND PANTRIES TYPICAL ALL UNITS.
2. PROVIDE (1)-3/4" WD SHELF (PTR) AT ALL WATER HEATER CLOSETS TYPICAL ALL UNITS.
3. PROVIDE (1)-PLY 1/2" WATER RESISTANT GYPD. @ ALL BATHROOM WALLS AND CEILINGS TYP.
4. PROVIDE (1)-PLY 5/8" TYPE X GYPD. AT ALL WATER HEATER CLOSETS WALLS AND CEILINGS. TYPICAL ALL UNITS
5. REFER TO MECHANICAL PLANS FOR LOWERS AND LOCATIONS.
6. ALL CABINETS TO HAVE SPESPLASHES & TO BE STAINED. TYPICAL ALL UNITS.



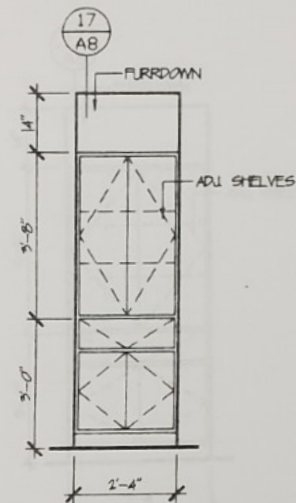
1 CABINET ELEVATION

SCALE: 3/8"=1'-0"



2 CABINET ELEVATION

SCALE: 3/8"=1'-0"

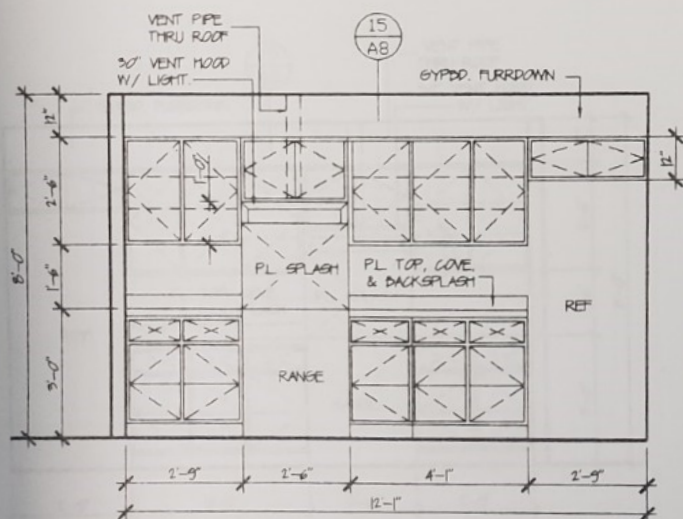


3 CABINET ELEVATION

SCALE: 3/8"=1'-0"

BATH NOTES:

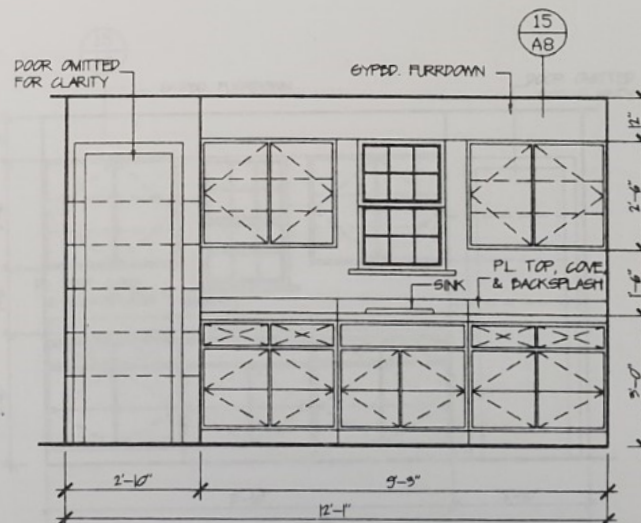
1. PROVIDE BLOCKING BEHIND ALL BATH ACCESSORIES
2. PROVIDE 4'-0" HIGH G.T. WAINSCOT ON MOISTURE RESISTANT GYPD. AT ALL WALLS THINSET APPLICATION
3. INSULATE ALL TOILET WALLS TYP.
4. BULLNOSE ALL EXPOSED EDGES OF G.T. WAINSCOT. TYPICAL
5. ALL CABINETS TO BE STAINED
6. PROVIDE 18" VANITY W/ SYNTHETIC MARBLE TOPS W/ INTEGRAL BOWL AND SIDE SPLASHES.
7. PROVIDE 2 X 6 WD BLOCKING AT WATER CLOSET PERIMETER AT 33" AFF.



4 CABINET ELEVATION

SCALE: 3/8"=1'-0"

PROVIDE SIDE SPLASHES AT ALL NEW CABINETS.



5 CABINET ELEVATION

SCALE: 3/8"=1'-0"

PROVIDE SIDE SPLASHES AT ALL NEW CABINETS.

GENERAL NOTES:

1. PROVIDE (5)-3/4" WD SHELVES (PTD) AT ALL INTERIO STO ROOMS AND PANTRIES TYPICAL ALL UNITS.
2. PROVIDE (1)-3/4" WD SHELF (PTD) AND ROD AT ALL INTERIOR CLOSETS TYPICAL ALL UNITS.
3. PROVIDE (1)-PLY 1/2" WATER RESISTANT GYPD @ ALL BATHROOM WALLS AND CEILINGS TYP.
4. PROVIDE (1)-PLY 5/8" TYPE X GYPD. AT ALL WATER HEATER CLOSETS WALLS AND CEILINGS. TYPICAL ALL UNITS
5. REFER TO MECHANICAL PLANS FOR WALL LOWERS AND THEIR LOCATIONS. TYP.
6. ALL CABINETS TO BE STAINED.