

# HURRICANE IRMA PRE-LANDFALL WEBINAR



Your Resource.  
Your Advocate.  
Your Partner.

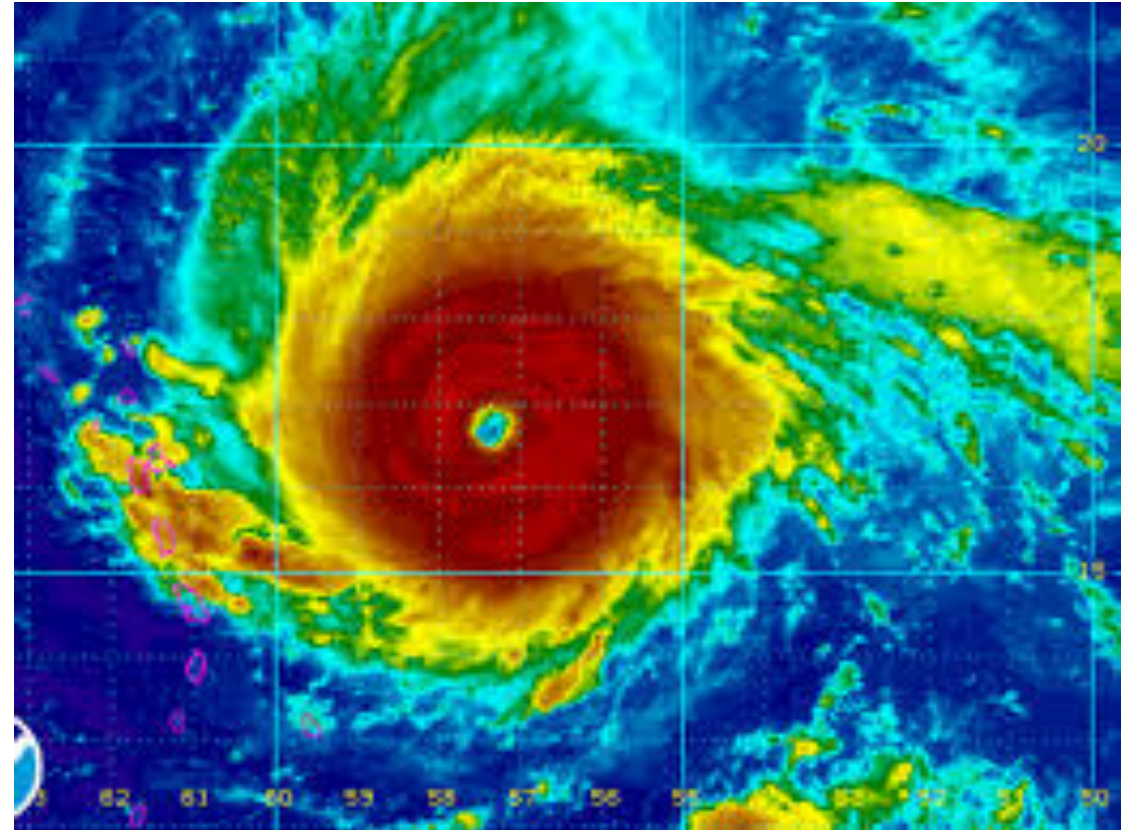


## FMIT PLANS FOR RESPONSE & RECOVERY

Tony Scott, Chief Information Officer

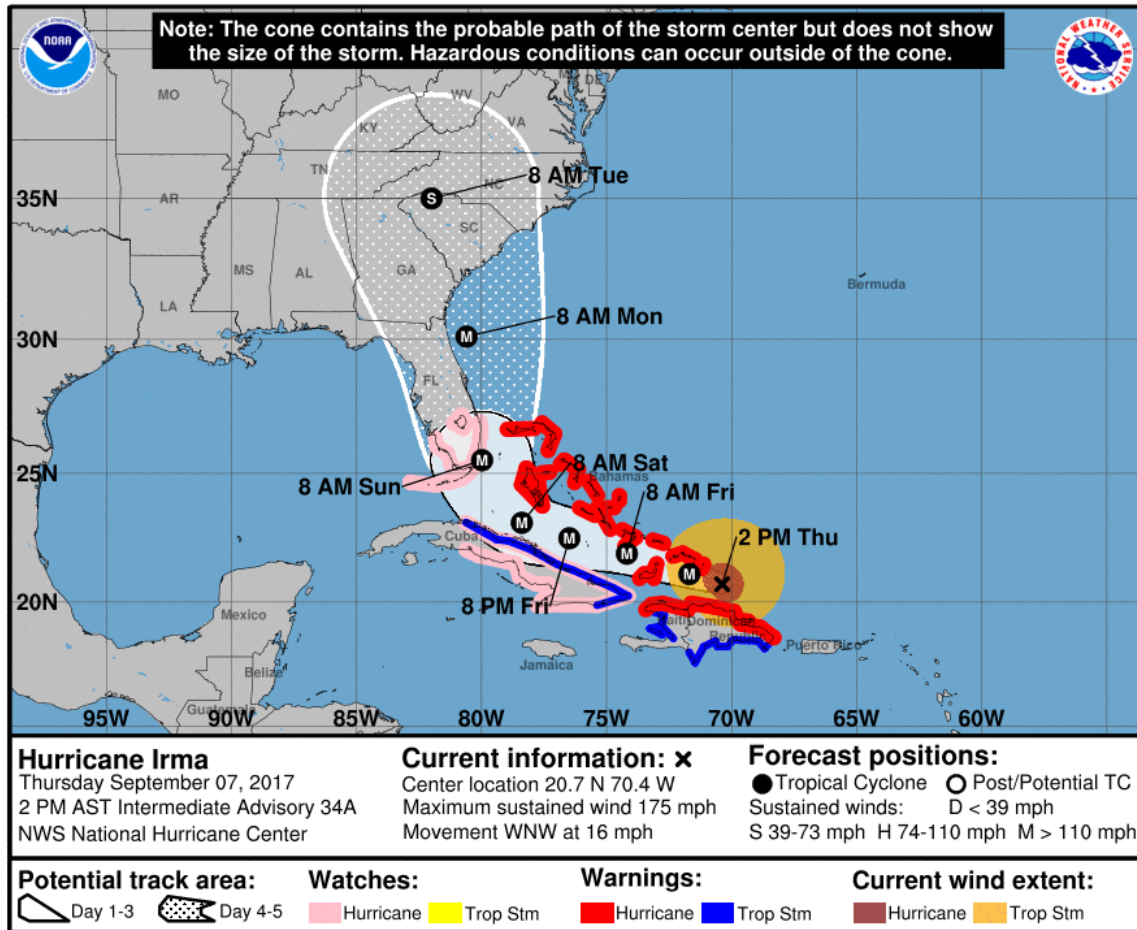
## Webinar Outline

- IRMA Update
- FMIT Preparations
- Member Tools
- Member Prep Checklist



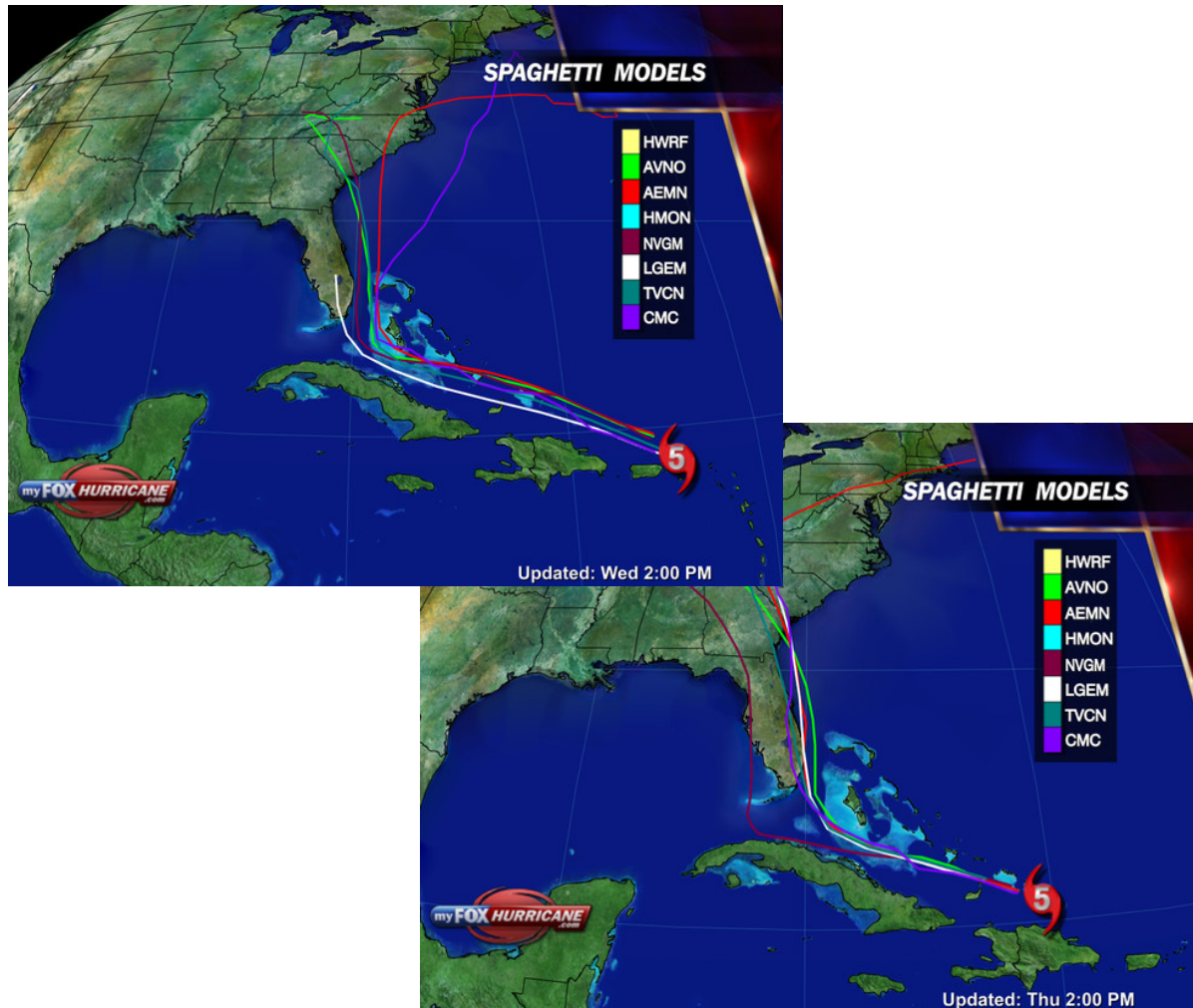


## Models Currently in Agreement that Portions of Florida Will Feel Effects from IRMA



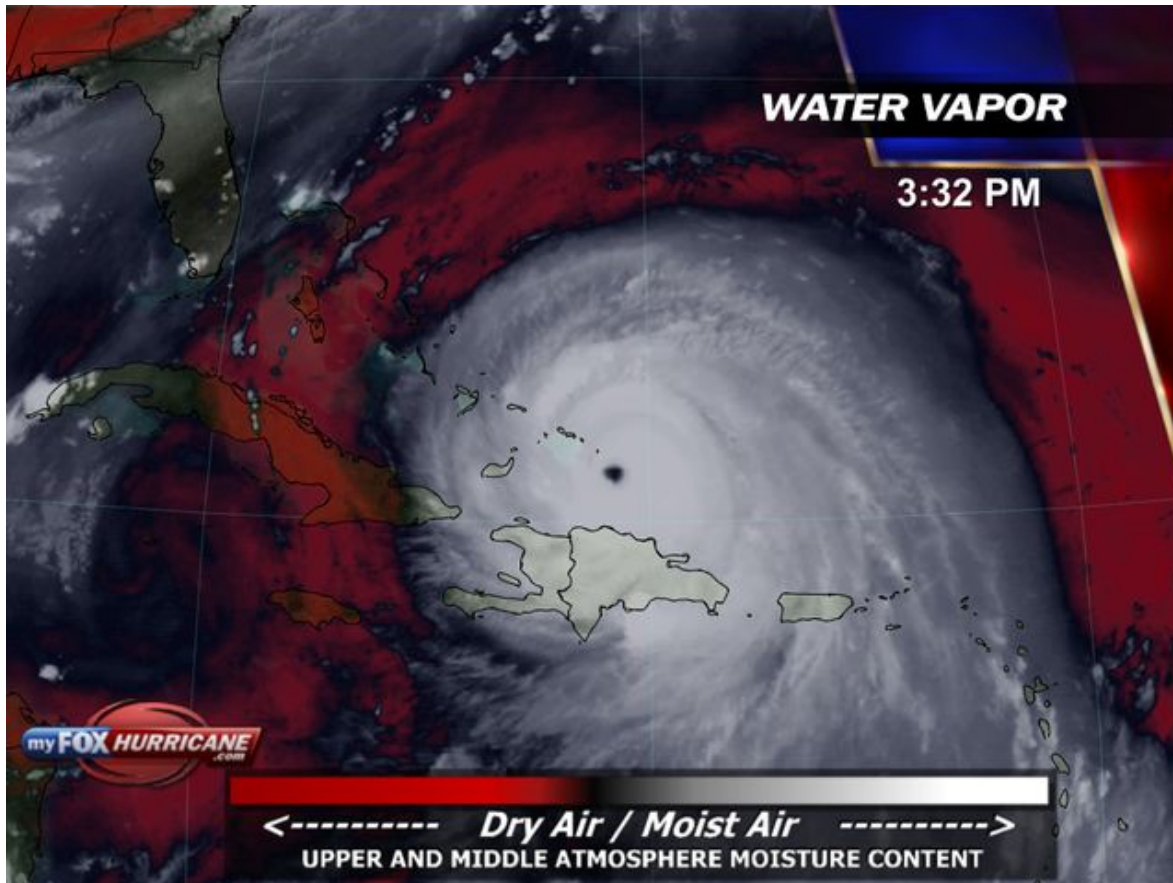
- Models have a 100+ mile margin of error 3+ days out from the current storm location. Storm is currently larger than Florida
- Euro Model appears to be more westerly path. GEFS appears to be more easterly path which is why projection cone is still wide 2+ days out from landfall.
- Strength projections still indicate a potential CAT 4 at landfall, should one occur
- Large size of Storm Means No Matter Path This Storm Will Affect Much of Florida.

## Models Currently in Agreement that Portions of Florida Will Feel Effects from IRMA



- Models have a 100+ mile margin of error 3+ days out from the current storm location. Storm is currently larger than Florida
- Euro Model appears to be more westerly path. GEFS appears to be more easterly path which is why projection cone is still wide 2+ days out from landfall.
- Strength projections still indicate a potential CAT 4 at landfall, should one occur
- Large size of Storm Means No Matter Path This Storm Will Affect Much of Florida.

## Models Currently in Agreement that Portions of Florida Will Feel Effects from IRMA



- Models have a 100+ mile margin of error 3+ days out from the current storm location. Storm is currently larger than Florida
- Euro Model appears to be more westerly path. GEFS appears to be more easterly path which is why projection cone is still wide 2+ days out from landfall.
- Strength projections still indicate a potential CAT 4 at landfall, should one occur
- Large size of Storm Means No Matter Path This Storm Will Affect Much of Florida.

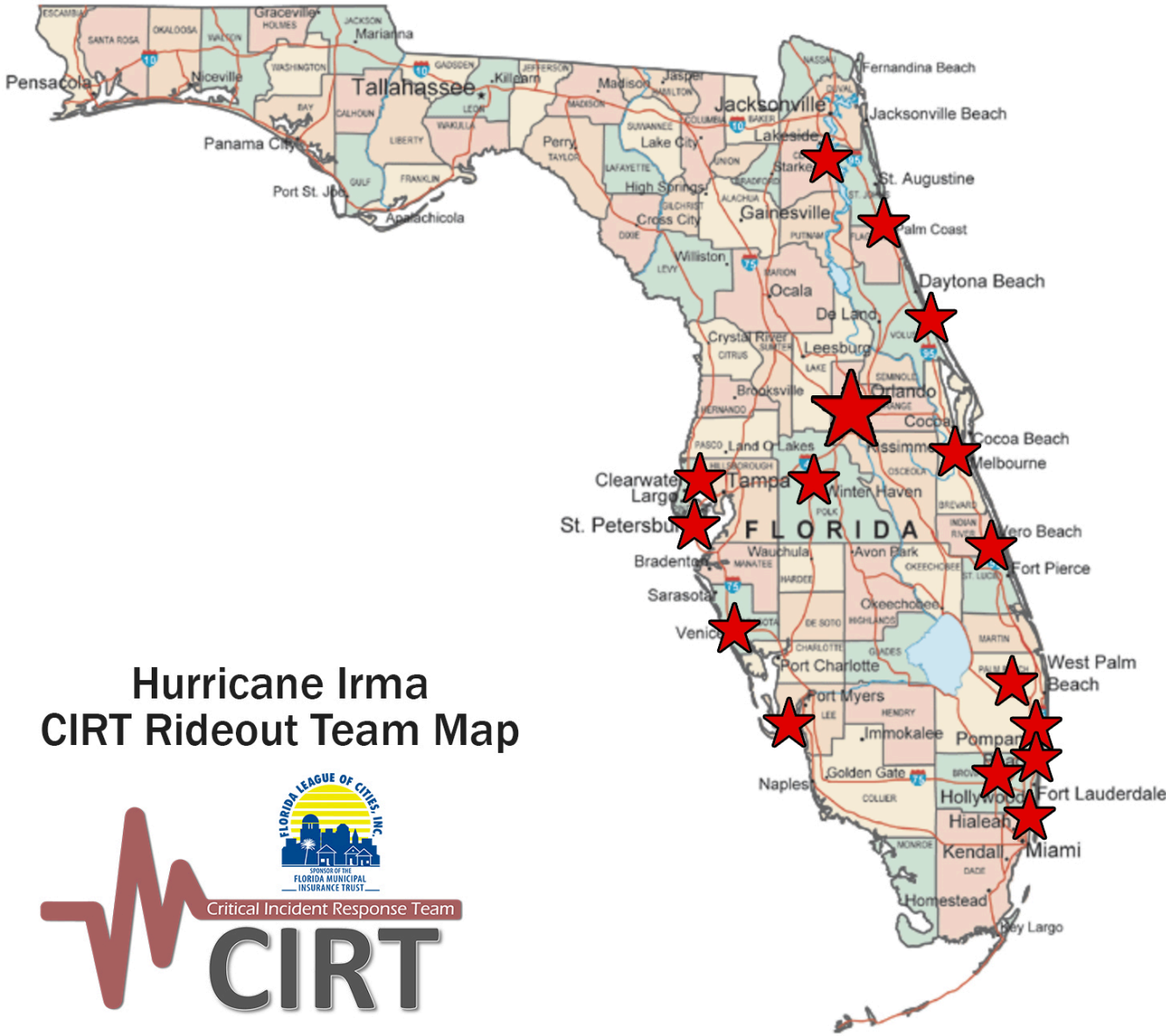




## FMIT Preparing for Irma

- Monitoring Storm Path Projections
- FMIT EOC in Orlando Activating This Weekend.
- Largest CIRT Team in FMIT History Being Deployed Based Upon Path
- Will Staff Certain Member EOCs Based Upon Area & Path (w/Sat Phones)
- Satellite Phones Have Been Distributed to Members Who Previously Established Expectation with FMIT/Synergy During Prep Mtgs

# FMIT CRITICAL INCIDENT RESPONSE TEAM

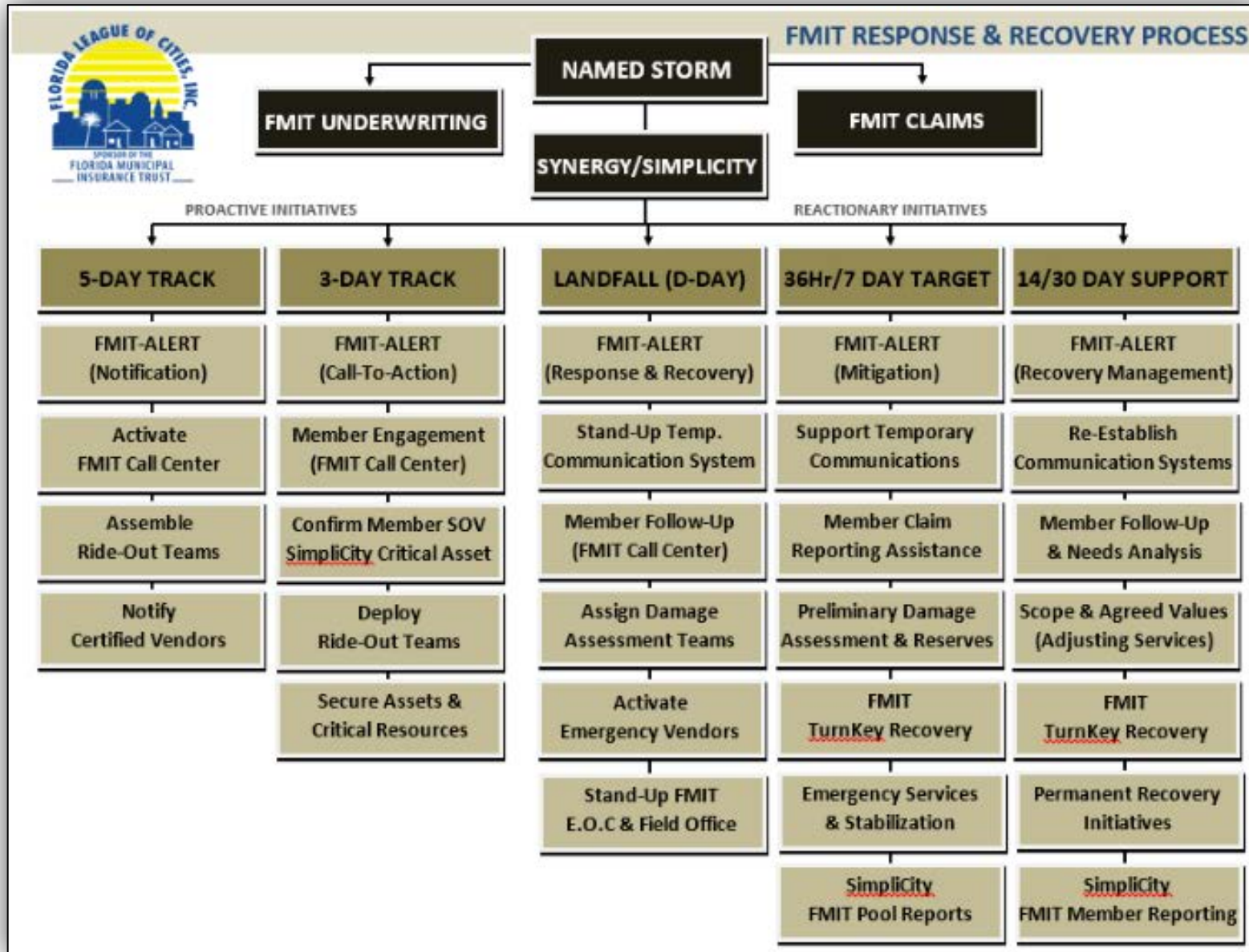


Hurricane Irma  
CIRT Rideout Team Map





# FMIT CAT WORKFLOW...



## FMIT CAT Activation Plan & Standard Action Items.

- ✓ Members to further define individual expectations &/or timelines.

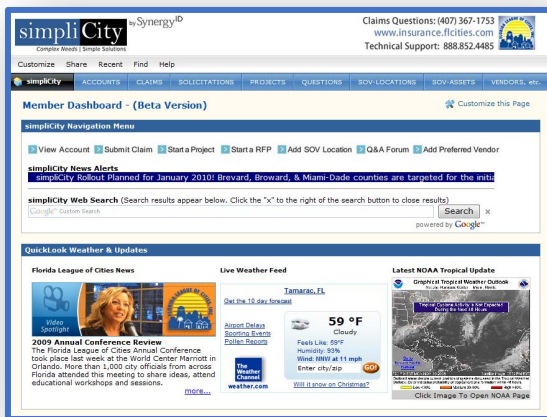




## FMIT Responding to Irma (First 72 hrs)

- ✓ Preliminary Damage Assessments (PDA) using TrackDown Mobile App
- ✓ Emergency Stabilization Services (MVP)
- ✓ Manage Assigned FMIT Staging Areas (Field Ops)
- ✓ Roll-Up Member Loss Notices
- ✓ Populate Claim Intake
- ✓ First 10 Days After Storm, Focus will be on Recovering Critical Member Assets

# FMIT MEMBER RECOVERY TOOLS



**simpliCity<sup>SM</sup>**

(Loss Recovery/Claims Mgt.)



**Trackdown<sup>SM</sup>**

(Mobile Field Solutions)

**FMIT Turnkey Recovery<sup>SM</sup>**

(Managed Repair Program)



## Claim Info, Scopes of Work, Job Costs, Claims Payments, Damage Assessments, Daily Notes & More...

The screenshot shows the simpliCity website by SynergyID. The header includes the logo, contact information (Claims Questions: (407) 367-1753, www.insurance.flcities.com, Technical Support: 888.852.4485), and a navigation bar with links like ACCOUNTS, CLAIMS, SOLICITATIONS, PROJECTS, QUESTIONS, SOV-LOCATIONS, SOV-ASSETS, and VENDORS, etc. The main content area is titled 'Member Dashboard - (Beta Version)' and features a 'simpliCity Navigation Menu' with links such as View Account, Submit Claim, Start a Project, Start a RFP, Add SOV Location, Q&A Forum, and Add Preferred Vendor. There are also sections for 'simpliCity News Alerts' (e.g., 'simpliCity Rollout Planned for January 2010!') and a 'Web Search' bar. The bottom section, 'QuickLook Weather & Updates', includes a 'Florida League of Cities News' video spotlight, a 'Live Weather Feed' for Tamarac, FL (59°F, Cloudy), and a 'Latest NOAA Tropical Update' with a graphical outlook.

- Stores current & previous years insurance Schedule of Values,
- Stores all Loss/Claims data for review by FMIT, Member, 3<sup>rd</sup> Party (Auditor, FEMA, Etc...),
- Stores COOP Plans and other documents for Risk Managers and others to use for Risk Management,
- Access to FEMA Price Lists,
- Most importantly, simplicity is the tool FMIT uses to track Irma recovery efforts.

**TrackDown**  
INTELLIGENT ASSET ASSESSMENT

Florida Municipal Insurance Trust  
FMIT Turnkey Recovery Program

Member Damage Assessment Date: 10/13/2016

---

**General Information**

Related Account: 0398 - City of New Smyrna Beach  
Completed By: Taylor Matheny  
Contact Phone: 4077442686  
Related Event: Hurricane Matthew  
Assessment Date: 10/13/2016  
Assessment Time: 9:08 AM  
End Time: 9:47 AM

**Asset/Location Information**

Location Number (6 Digit FMIT Number): 020001  
Asset Name/Description: Aircraft Hangar D  
Location: 412 United Way, New Smyrna Beach, FL  
GPS Lat/Long: 29.047174, -80.947094

**Damage Information**


Location Damaged: Yes  
Immediate Action Required: Yes  
Immediate Services Needed:  
Asset Safe for Occupancy and/or Use?: No  
Imminent Threat to Public Health or Safety?: No  
Does Asset Pose Environmental Concern?: No

**Estimated Damages & Notes**

Estimated Damage Amount: \$100,000 or greater  
Damage Notes: Extensive damage to hangar due to wind. 3 sides of building are completely gone. Building construction is block (CMU) on three sides approx. 18ft high. Pre-engineered metal above approx. 12ft. with insulation and rolling metal door. Significant debris still remains inside including insulation, metal debris, aircrafts/aircraft parts. Immediate need to clean up to reduce FOD hazard.

Wind Damage %: 100  
Flood Damage %: 0  
Other Damage %: 0

**Damage Photos & Signature**



## Mobile Application(s) Deliver Real-Time Data Capture & Reporting



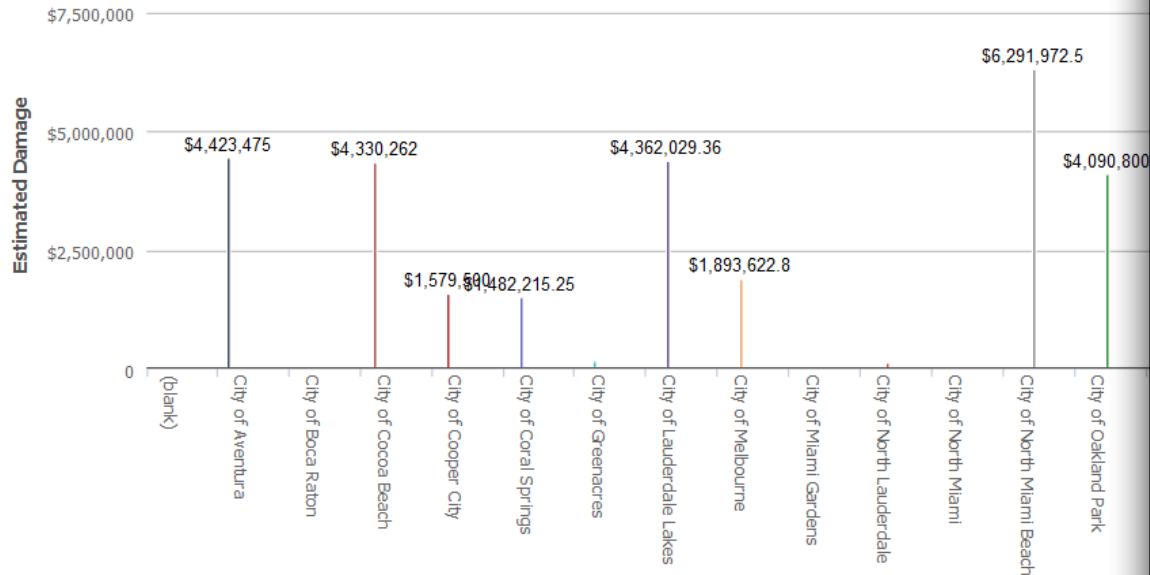
- FMIT TrackDown<sup>SM</sup> Mobile Application used by Members and Adjusters.
- Application is Linked to Member's Locations (GPS) and Insurance SOV.
- Data & Photo Collection Made Simple.
- Automatic Upload to SimpliCity<sup>SM</sup> and Email Distribution to all Involved Parties.
- Networked via Cell or SAT Connectivity with Breadcrumb Reporting Functionality.



# Trackdown Mobile Application

## Damage Assessment Bar Graph

Bar Chart - Estimated Damage



■ (blank) ■ City of Aventura ■ City of Boca Raton ■ City of Cocoa Beach ■ City of Cooper City ■ City of Coral Springs  
■ City of North Miami ■ City of North Miami Beach ■ City of Oakland Park ■ City of Panama City ■ City of Pembroke Park  
■ Coral Bay Community Development District ■ Sumter County Board of County Commissioners ■ Synergy Asset Survey  
■ Village of Miami Shores ■ Village of Royal Palm Beach ■ Village of Wellington



Florida Municipal Insurance Trust  
FMIT Turnkey Recovery Program

### Member Damage Assessment

Date: 3/26/2016

#### General Information

Related Account: 0049 - City of Boca Raton  
 Completed By: Taylor Matheny  
 Contact Phone: 9547327594  
 Related Event: Property Loss (Non-CAT)  
 Assessment Date: 3/26/2016  
 Assessment Time: 8:24 AM  
 End Time: 8:45 AM

#### Asset/Location Information

Location Number (6 Digit FMIT Number): 001001  
 Asset Name/Description: 1 - City Hall  
 Location: 201 West Palmetto Park Rd, Boca Raton, FL  
 GPS Lat./Long.: 27.9876, -80.518182

#### Damage Information

Location Damaged: Yes  
 Immediate Action Required: Yes  
 Immediate Services Needed: Drying, Emergency Generator, Fuel (Diesel), Temporary Office  
 Asset Safe for Occupancy and/or Use?: Restricted Use  
 Imminent Threat to Public Health or Safety?: Yes  
 Does Asset Pose Environmental Concern?: No

#### Estimated Damages & Notes

Estimated Damage Amount: \$500,000 or greater

#### Damage Notes:

Vertical water damage through interior walls caused by flooding from roof parapet. Heavy rains flooded the Boca Raton area on Thursday evening. Roof designed draining system could not support proper drainage due to extraordinary rainfall accumulation. Rimkus Engineer (Bob Swift) and IA Field Adjuster inspected roof areas to confirm finding. After extensive coverage review, FMIT extended Flood Endorsement to Loss. TurnKey Recovery continuing to work with City Team to guide recovery efforts as necessary to stabilize affected areas and minimize disruption to critical work areas by Monday morning. Water extraction has been completed throughout the greater 1st & 2nd floor area. Drying & Dehumidification underway and showing positive results as of Friday afternoon. Tear out of affected carpet throughout building is scheduled for Saturday. All work spaces and public access areas are to be functional by Monday morning. FMIT to further review and develop repair and build-back scope on Monday.

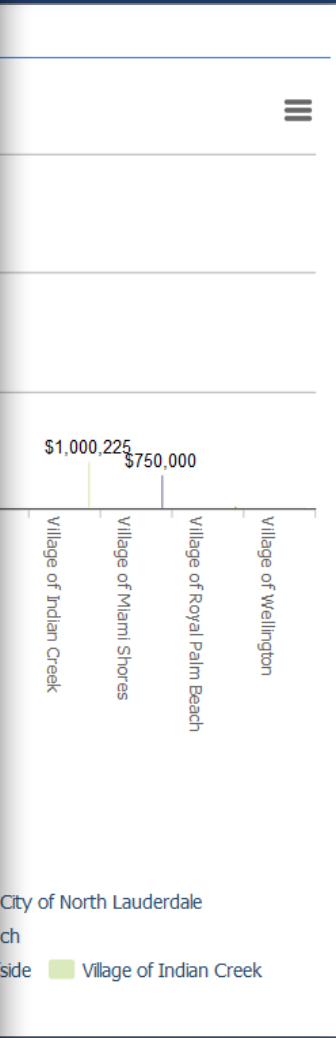
#### Damage Photos & Signature



Additional photos uploaded directly to the simpliCity dashboard



Property Damage Response & Recovery Program



■ City of North Lauderdale  
■ Village of Indian Creek

# ***FMIT TURNKEY RECOVERY PROGRAM (Available on All Claims)***

- Expedites Response & Recovery Initiatives.
- Minimizes Increased Secondary Damages & Costs.
- Recovery Services Authorized in Advance by FMIT.
- Approved Material Deposits and Invoices Paid Direct to Contractors.
- Pre-Identified & Approved Contractors (MVP)
- Limits Out-of-Pocket Expense for Members.
- Significantly Reduces Financial Impact a Loss can have on Members Ability to Recover.

## **Exclusive Only to FMIT Members...**

The advertisement features a construction worker in a yellow hard hat and blue shirt, holding a laptop. The laptop screen displays the 'FMIT TurnKey Recovery' logo and a list of benefits: 'No Additional Costs', 'Approved Insurance Projects', 'Upfront Material Deposits', 'Contractor Progress Payments', 'Reduced Financial Exposure', and 'No Hassle!'. The background is a blueprint with various architectural drawings and text. A red banner in the top left corner reads 'No Additional Cost'. The Florida League of Cities, Inc. logo is prominently displayed in the center, with the text 'SPONSOR OF THE FLORIDA MUNICIPAL INSURANCE TRUST' below it. To the right of the logo are three blue boxes with the words 'Better', 'Faster', and 'Cheaper'. At the bottom, the text 'TURNKEY RECOVERY' is written in large, bold, blue letters, followed by 'Member Direct Repair Program' in smaller black text.

**No Additional Cost**

**FLORIDA LEAGUE OF CITIES, INC.**  
SPONSOR OF THE  
FLORIDA MUNICIPAL  
INSURANCE TRUST

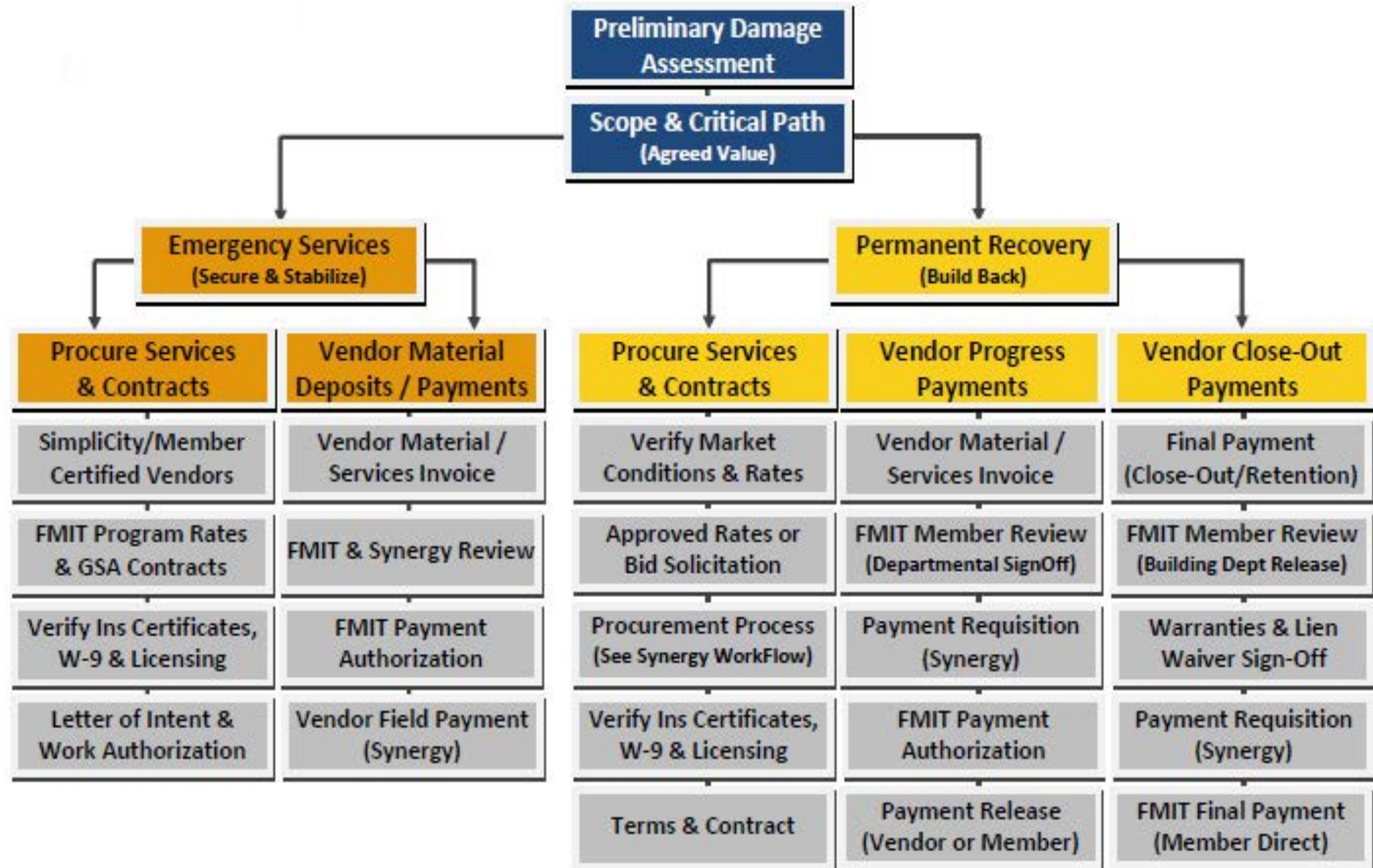
**Better**  
**Faster**  
**Cheaper**

**TURNKEY RECOVERY**  
Member Direct Repair Program

**FMIT TurnKey Recovery**  
✓ No Additional Costs  
✓ Approved Insurance Projects  
✓ Upfront Material Deposits  
✓ Contractor Progress Payments  
✓ Reduced Financial Exposure  
✓ No Hassle!



# FMIT TURNKEY RECOVERY PROGRAM



## FMIT Works with FEMA to Support Member's Public Assistance.

FLC-PACT was formed to take a proactive approach to ensure that Insurance & FEMA are working together and in support of another.



# PACT

Public  
Assistance  
CloseOut  
Team

- FLC-PACT Identifies Anticipated Insurance Proceeds, Eligible Scopes-of-Works and Provides All Claim Related Documentation.
- FLC-PACT reviews FEMA PW Development and Grant Application to Ensure Accurate Claim Reported Information.

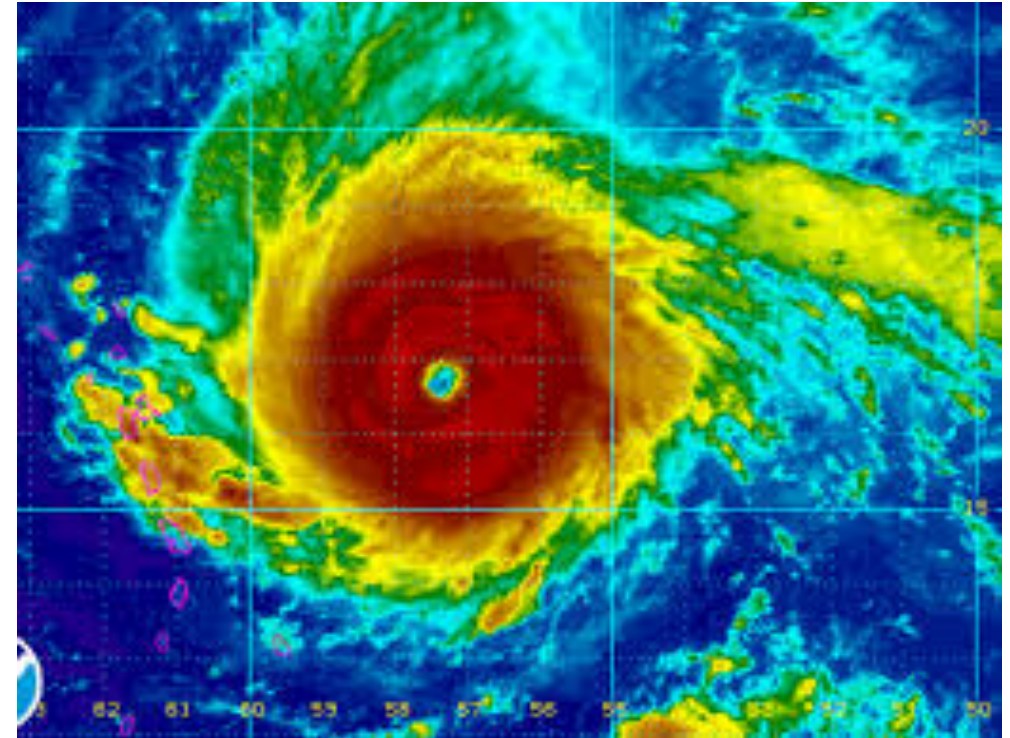


**KEEP  
CALM  
AND  
TAKE THE  
NEXT STEP.**



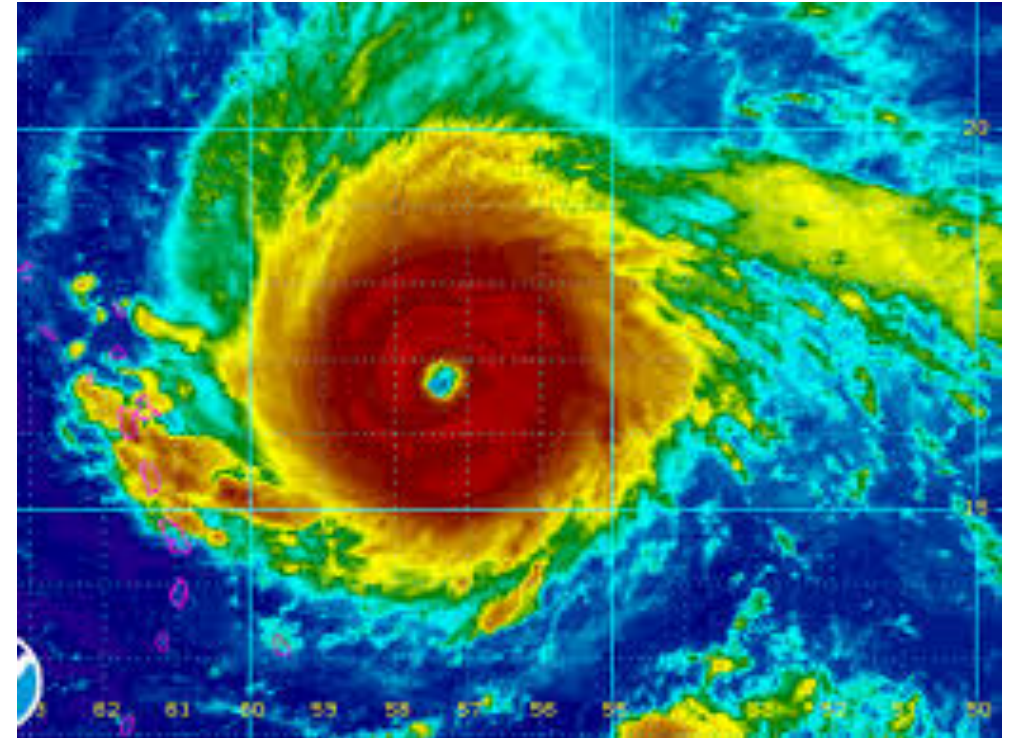
## Member Prep Checklist

- Continue Working Internally w/Emergency Response Teams,
- Ensure “Loose” Assets are Either Secured or Stored,
- Ensure Hurricane Protection Devices are Operational & Engaged
- Ensure that Current Email used to Receive FMIT Alerts & Current Phone # in FMIT System is Accessible Where You Are.



## Member Prep Checklist

- **Post Event: Reach out to Internal Contacts for Damage Status,**
- **Monitor FMIT Alerts for “I Have Damage” Post Event Email & Respond or Call FMIT CAT Number**
- **Stay By Your Cell Phone & Email For Incoming Contact From FMIT**
- **FMIT is Here & Ready To Support Your Recovery Efforts**





## FMIT Next Steps:

- **Completing simplicity & Trackdown registrations and updates**
- **Receiving Turnkey Recovery Participation Emails (send to [admin@synergyid.com](mailto:admin@synergyid.com))**
- **Updating simpliCity with latest Schedule of Values data from FMIT**
- **Transmitting this information to FMIT Members**

## Key Contact Information:

**FMIT EOC Orlando**

**844-FMIT-CAT (844-364-8228)**

**FMIT EOC IRMA Email**

**[irma@flcities.com](mailto:irma@flcities.com)**