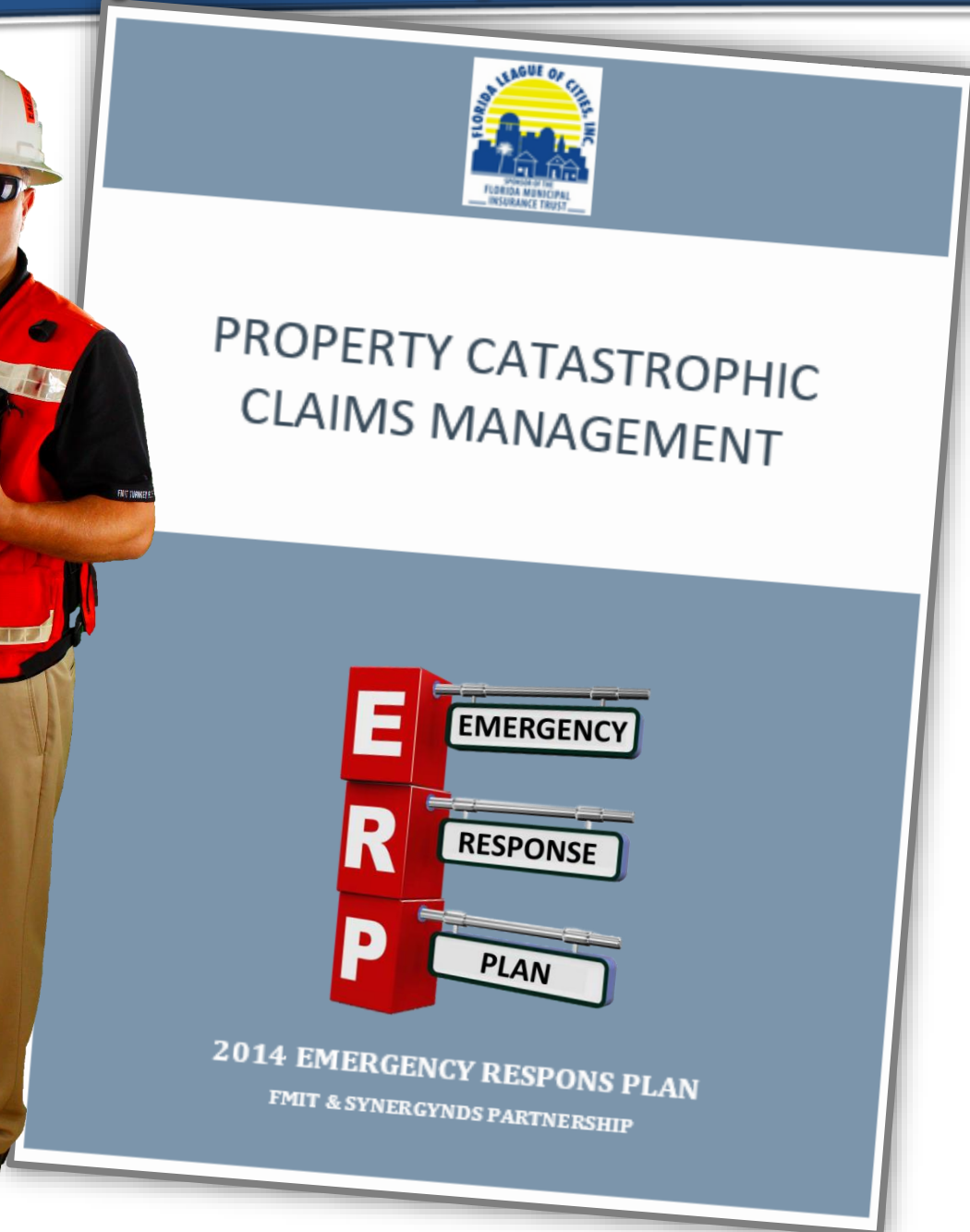


FMIT CIRT (Critical Incident Response Team)





CIRT is FMIT's Commitment to Member's Response & Recovery.

- No Additional Cost
- Part of FMIT ALAE (Claim Expense)
- Dedicated Resources
- Self-Sustained Model
- Supports Members Needs
- Independent Adjusters
- Applied Sciences (C&O, Engineers)

CARRYING OUT THE FMIT ERP...



- ✓ Pre-Event Deployment (Ride-Out Teams)
- ✓ Preliminary Damage Assessments (PDA)
- ✓ Emergency Stabilization Services (MVP)
- ✓ FMIT ALAE Support
- ✓ Stand-Up Event Gateway
- ✓ Manage Assigned FMIT Staging Areas (Field Ops)
- ✓ Roll-Up Member Loss Notices
- ✓ Populate Claim Intake

Some Events May Require a FMIT GATEWAY Location to be Activated.



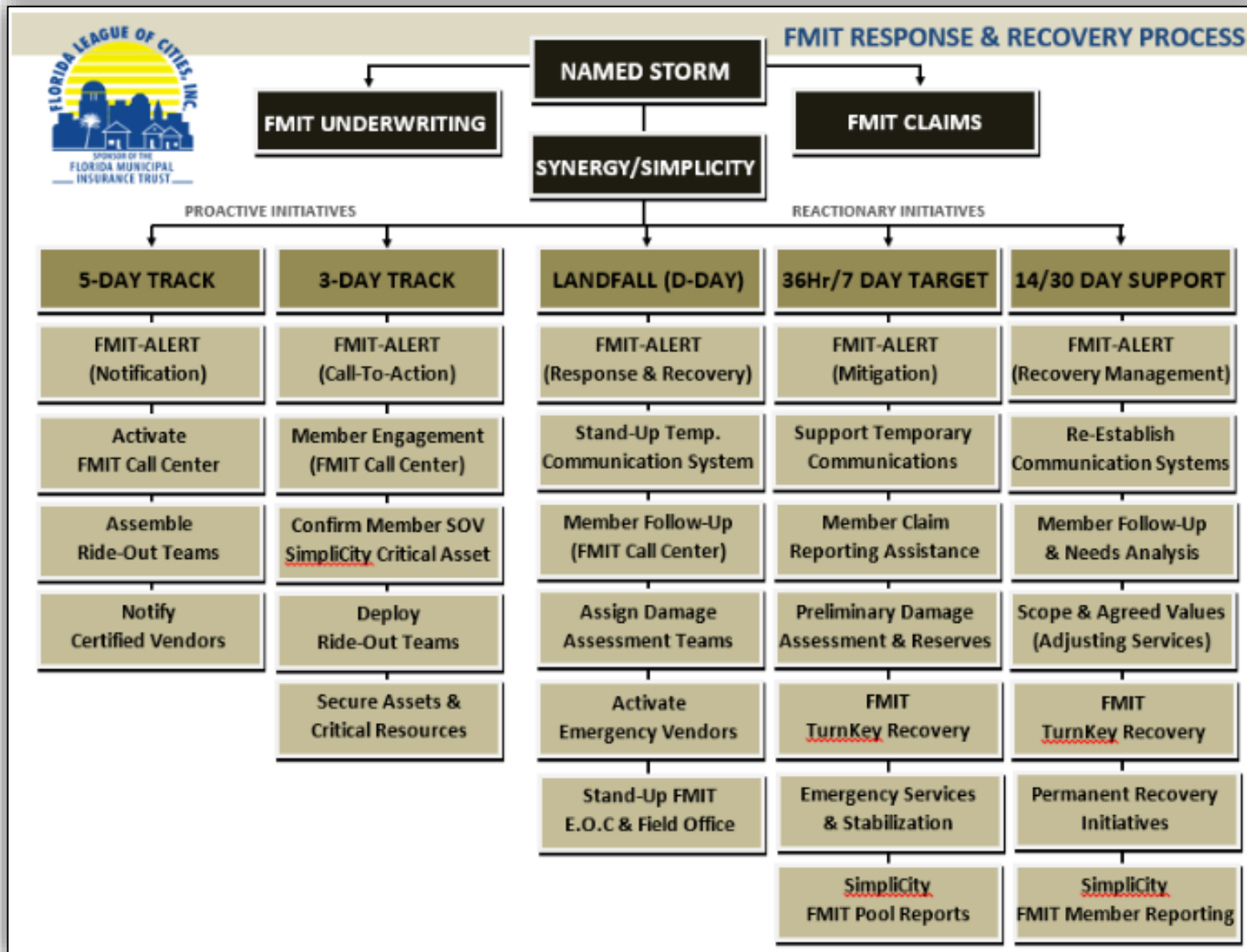
- ✓ Gateway is a Location for CIRT-Partners and Emergency Vendors to 'Check-In'.
- ✓ Personnel, Vehicles & Equipment Are Inspected and Cleared for Assignment.
- ✓ Police Escorts are Generally Scheduled from the GATEWAY Point to Staging Area or Member.

Some Events May Require a STAGING AREA to be Activated.



- ✓ Staging Area is a Location for CIRT MVP Partners and Emergency Vendors to setup Recovery Operations.
- ✓ Personnel, Vehicles & Equipment Can Be 'Staged' at this Location.
- ✓ Workforce Temporary Housing, Food &/or Fueling Services May Be Available

FMIT CAT WORKFLOW...



FMIT CAT Activation Plan & Standard Action Items.

- ✓ Members to further define individual expectations &/or timelines.